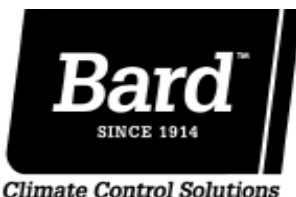

INSTALLATION INSTRUCTIONS

Electric Heat Packages

Models:

EHCH036A-A05	EHVH036B-S09	EHCH048A-B09	EHCH060A-C09
EHCH036A-A10	EHVH036B-S15	EHCH048A-B15	EHCH060A-C15
EHCH036A-A15	EHVH036B-T05	EHCH048A-C05	EHVH060A-S05
EHCH036A-B05	EHVH036B-T09	EHCH048A-C09	EHVH060ADR05
EHCH036A-B09	EHVH036B-T15	EHCH048A-C15	EHVH060ADR10
EHCH036B-B09	EHCH042A-A05	EHWH048A-A04	EHVH060ADR15
EHCH036A-B15	EHCH042A-A10	EHWH048A-A05	EHVH060B-R05
EHCH036A-C05	EHCH042A-B05	EHWH048A-A10	EHVH060B-R10
EHCH036A-C09	EHCH042A-B09	EHWH048A-A15	EHVH060B-R15
EHCH036A-C15	EHCH042A-B15	EHCH060A-A05	EHVH060B-S05
EHVH036A-R05	EHWH042A-A05	EHCH060A-A10	EHVH060B-S09
EHVH036A-R10	EHWH042A-A10	EHCH060A-A15	EHVH060B-S15
EHVH036A-S05	EHWH042B-A10	EHCH060B-A05	EHVH060B-T05
EHVH036A-S09	EHWH042A-A15	EHCH060B-A10	EHVH060B-T09
EHVH036A-S15	EHWH042B-A15	EHCH060B-A15	EHVH060B-T15
EHVH036ADS09	EHWH042A-B05	EHCH060A-A20	EHWH060A-A10
EHVH036B-R05	EHCH048A-A05	EHCH060A-B05	EHWH060A-A15
EHVH036B-R10	EHCH048A-A10	EHCH060A-B09	EHWH060A-B15
EHVH036B-R15	EHCH048A-A15	EHCH060A-B15	EHWH060A-Q15
EHVH036B-S05	EHCH048A-B05	EHCH060A-C05	

For Use with Large Cabinet Wall-Mounted Heat Pumps



Bard Manufacturing Company, Inc.
Bryan, Ohio 43506
www.bardhvac.com

Manual: 2100-781D
Supersedes: 2100-781C
Date: 7-24-25

CONTENTS

General Information	3
Description of Equipment	3
Important.....	3
Shipping Damage	3
Unpacking the Electric Heat Package	3
Wiring Main Power.....	6

Figures

Figure 1	Electrical Connections.....	7
Figure 2	Electric Heater Access Panel and Control Panel Cover Locations.....	9
Figure 3	Rod Support and Screw Mounting Positions	12
Figure 4	A through D	13
Figure 4	E and F	14
Figure 5	Installing Heater Base and Connecting Wiring	15
Figure 6	Serial Plate Showing Approved Heater Packages.....	16

Installation	8
Installation of Heater Package	8

Tables

Table 1A	Electrical Data and BTU Output – EHCH Series.....	4
Table 1B	Electrical Data and BTU Output – EHVH/EHWH Series.....	5
Table 2A	References to Figures 3 and 4 by Model Number – EHCH Series	10
Table 2B	References to Figures 3 and 4 by Model Number – EHVH/EHWH Series..	11

GENERAL INFORMATION

Description

The EHCH/EHVH/EHWH series electric heater packages are field-installable heater packages suitable for use with Bard wall mount heat pumps. The packages consist of the electric heat strip, the heater control base (which includes the heat contactors and circuit breaker or toggle or rotary disconnects), installation instructions and wiring diagrams. See Tables 1A and 1B on pages 4 and 5 for nominal electrical data and BTU output. **Before installation, check unit serial plate to ensure the heater package model to be installed is a listed heater package that is suitable for use with the Bard wall mount unit** (see Figure 6 on page 16).

Important

The equipment covered in this manual is to be installed by trained, experienced service and installation technicians.

Shipping Damage

Upon receipt of equipment, the carton should be checked for external signs of shipping damage. If damage is found, the receiving party must contact the last carrier immediately, preferably in writing, requesting inspection by the carrier's agent.

Unpacking the Electric Heat Package

Remove the heat package from the shipping carton. The heat package must consist of the following:

1. Basic heater.
2. Electric heat control base and wiring.
3. Installation instructions.
4. Two wiring diagrams, one to be applied to unit.
5. Adhesive label to re-mark serial plate to indicate new model number. This is attached to the front of these instructions.

TABLE 1A
Electrical Data and BTU Output – EHCH Series

Heater Package Model	Volts	Phase	Nominal KW	Nominal BTU
EHCH036A-A05	230/208	1	4.6/3.8	15,700/12,800
EHCH036A-A10	230/208	1	9.2/7.5	31,400/25,600
EHCH036A-A15	230/208	1	13.8/11.3	47,100/38,400
EHCH036A-B05	230/208	3	4.6/3.8	15,700/12,800
EHCH036A-B09	230/208	3	8.3/6.8	28,300/23,000
EHCH036B-B09	230/208	3	8.3/6.8	28,300/23,000
EHCH036A-B15	230/208	3	13.8/11.3	47,100/38,400
EHCH036A-C05	460	3	4.6	15,700
EHCH036A-C09	460	3	8.3	28,300
EHCH036A-C15	460	3	13.8	47,100
EHCH042A-A05	230/208	1	4.6/3.8	15,700/12,800
EHCH042A-A10	230/208	1	9.2/7.5	31,400/25,600
EHCH042A-B05	230/208	3	4.6/3.8	15,700/12,800
EHCH042A-B09	230/208	3	8.3/6.8	28,300/23,000
EHCH042A-B15	230/208	3	13.8/11.3	47,100/38,400
EHCH048A-A05	230/208	1	4.6/3.8	15,700/12,800
EHCH048A-A10	230/208	1	9.2/7.5	31,400/25,600
EHCH048A-A15	230/208	1	13.8/11.3	47,100/38,400
EHCH048A-B05	230/208	3	4.6/3.8	15,700/12,800
EHCH048A-B09	230/208	3	8.3/6.8	28,300/23,000
EHCH048A-B15	230/208	3	13.8/11.3	47,100/38,400
EHCH048A-C05	460	3	4.6	15,700
EHCH048A-C09	460	3	8.3	28,300
EHCH048A-C15	460	3	13.8	47,100
EHCH060A-A05	230/208	1	4.6/3.8	15,700/12,800
EHCH060A-A10	230/208	1	9.2/7.5	31,400/25,600
EHCH060A-A15	230/208	1	13.8/11.3	47,100/38,400
EHCH060B-A05	230/208	1	4.6/3.8	15,700/12,800
EHCH060B-A10	230/208	1	9.2/7.5	31,400/25,600
EHCH060B-A15	230/208	1	13.8/11.3	47,100/38,400
EHCH060A-A20	230/208	1	18.4/15.0	62,800/51,200
EHCH060A-B05	230/208	3	4.6/3.8	15,700/12,800
EHCH060A-B09	230/208	3	8.3/6.8	28,300/23,000
EHCH060A-B15	230/208	3	13.8/11.3	47,100/38,400
EHCH060A-C05	460	3	4.6	15,700
EHCH060A-C09	460	3	8.3	28,300
EHCH060A-C15	460	3	13.8	47,100

TABLE 1B
Electrical Data and BTU Output – EHVH/EHWH Series

Heater Package Model	Volts	Phase	Nominal KW	Nominal BTU
EHVH036A-R05	230/208	1	4.6/3.8	15,700/12,800
EHVH036A-R10	230/208	1	9.2/7.5	31,400/25,600
EHVH036A-S05	230/208	3	4.6/3.8	15,700/12,800
EHVH036A-S09	230/208	3	8.3/6.8	28,300/23,000
EHVH036A-S15	230/208	3	13.8/11.3	47,100/38,400
EHVH036ADS09	230/208	3	8.3/6.8	28,300/23,000
EHVH036B-R05	230/208	1	4.6/3.8	15,700/12,800
EHVH036B-R10	230/208	1	9.2/7.5	31,400/25,600
EHVH036B-R15	230/208	1	13.8/11.3	47,100/38,400
EHVH036B-S05	230/208	3	4.6/3.8	15,700/12,800
EHVH036B-S09	230/208	3	8.3/6.8	28,300/23,000
EHVH036B-S15	230/208	3	13.8/11.3	47,100/38,400
EHVH036B-T05	460	3	4.6	15,700
EHVH036B-T09	460	3	8.3	28,300
EHVH036B-T15	460	3	13.8	47,100
EHVH060A-S05	230/208	3	4.6/3.8	15,700/12,800
EHVH060ADR05	230/208	1	4.6/3.8	15,700/12,800
EHVH060ADR10	230/208	1	9.2/7.5	31,400/25,600
EHVH060ADR15	230/208	1	13.8/11.3	47,100/38,400
EHVH060B-R05	230/208	1	4.6/3.8	15,700/12,800
EHVH060B-R10	230/208	1	9.2/7.5	31,400/25,600
EHVH060B-R15	230/208	1	13.8/11.3	47,100/38,400
EHVH060B-S05	230/208	3	4.6/3.8	15,700/12,800
EHVH060B-S09	230/208	3	8.3/6.8	28,300/23,000
EHVH060B-S15	230/208	3	13.8/11.3	47,100/38,400
EHVH060B-T05	460	3	4.6	15,700
EHVH060B-T09	460	3	8.3	28,300
EHVH060B-T15	460	3	13.8	47,100
EHWH042A-A05	230/208	1	4.6/3.8	15,700/12,800
EHWH042A-A10	230/208	1	9.2/7.5	31,400/25,600
EHWH042A-A15	230/208	1	13.8/11.3	47,100/38,400
EHWH042B-A10	230/208	1	9.2/7.5	31,400/25,600
EHWH042B-A15	230/208	1	13.8/11.3	47,100/38,400
EHWH042A-B05	230/208	3	4.6/3.8	15,700/12,800
EHWH048A-A04	230/208	1	3.7/3.0	12,600/10,200
EHWH048A-A05	230/208	1	4.6/3.8	15,700/12,800
EHWH048A-A10	230/208	1	9.2/7.5	31,400/25,600
EHWH048A-A15	230/208	1	13.8/11.3	47,100/38,400
EHWH060A-A10	230/208	1	9.2/7.5	31,400/25,600
EHWH060A-A15	230/208	1	13.8/11.3	47,100/38,400
EHWH060A-B15	230/208	3	13.8/11.3	47,100/38,400
EHWH060A-Q15	575	3	15.1	51,200

Wiring Main Power

1. On all installations, size unit power supply wiring for the minimum circuit ampacity requirement for the unit and heater package combination listed on the unit serial plate.

For existing installations, addition or upgrading of a heater package may require that larger supply wires be run to the unit. Resize all power supply wires for the minimum circuit ampacity rating listed on the unit serial plate that is applicable for the combination of unit and heater package.

WARNING

Install properly sized power supply leads for the unit/heater combination minimum circuit ampacity as listed on the unit serial plate. Hazard of fire. Failure to install properly sized conductors could result in fire causing damage, bodily injury or death.

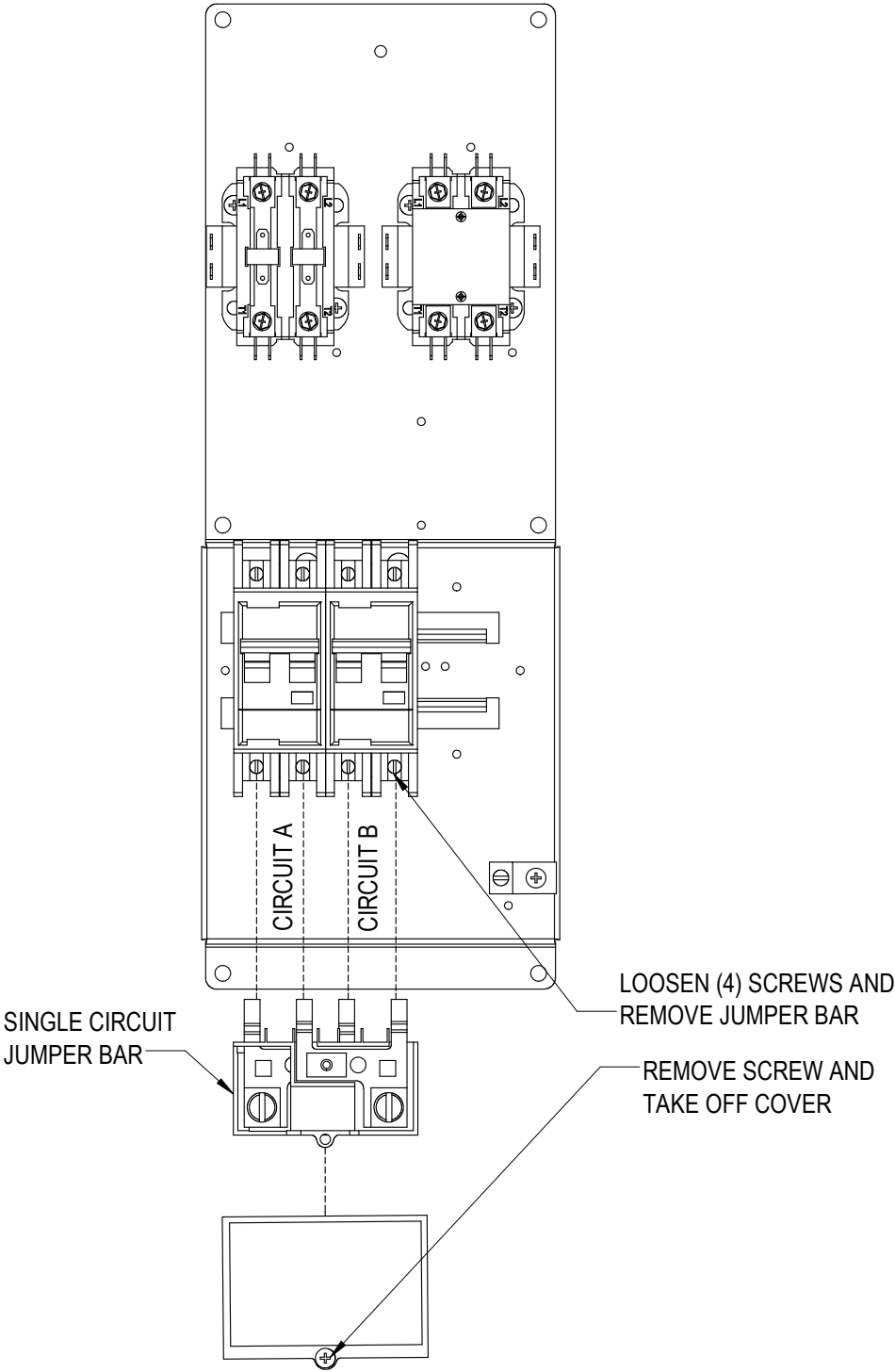
2. **All heater packages covered by this manual are factory wired for single supply circuit.** The following heater packages are field convertible to a dual supply circuit if required or desired:

EHCH036A-A10	EHVH036B-R15
EHCH036A-A15	EHVH060ADR05
EHCH042A-A10	EHVH060ADR10
EHCH042A-A15	EHVH060ADR15
EHCH048A-A10	EHVH060B-R05
EHCH048A-A15	EHVH060B-R10
EHCH060A-A05	EHVH060B-R15
EHCH060A-A10	EHWH042A-A10
EHCH060A-A15	EHWH042A-A15
EHCH060B-A05	EHWH042B-A10
EHCH060B-A10	EHWH042B-A15
EHCH060A-A15	EHWH048A-A05
EHCH060A-A20	EHWH048A-A10
EHVH036A-R10	EHWH048A-A15
EHVH036B-R05	EHWH060A-A10
EHVH036B-R10	EHWH060A-A15

To convert one of the above heater packages to dual circuit configuration before installation, loosen four (4) screws holding jumper bar in place and remove jumper bar (see Figure 1 on page 7). Circuits A + B are now identified on the heater package.

Wire should be sized to the minimum circuit ampacity as specified on the serial plates of units that accept this heater package for circuits A + B.

FIGURE 1
Electrical Connections



MIS-4421

INSTALLATION

Installation of Heater Package

1. Disconnect all power to unit before installation.

WARNING

Disconnect all power to unit before installing heater package. Hazard of electrical shock. Failure to disconnect power could result in injury or death.

2. Before installation, check unit serial plate to ensure that the heater package model to be installed is listed as a heater package suitable for use with the unit.

Under no circumstance shall a heater package be installed in a unit if the model number of the heater package does not appear on the unit serial plate.

WARNING

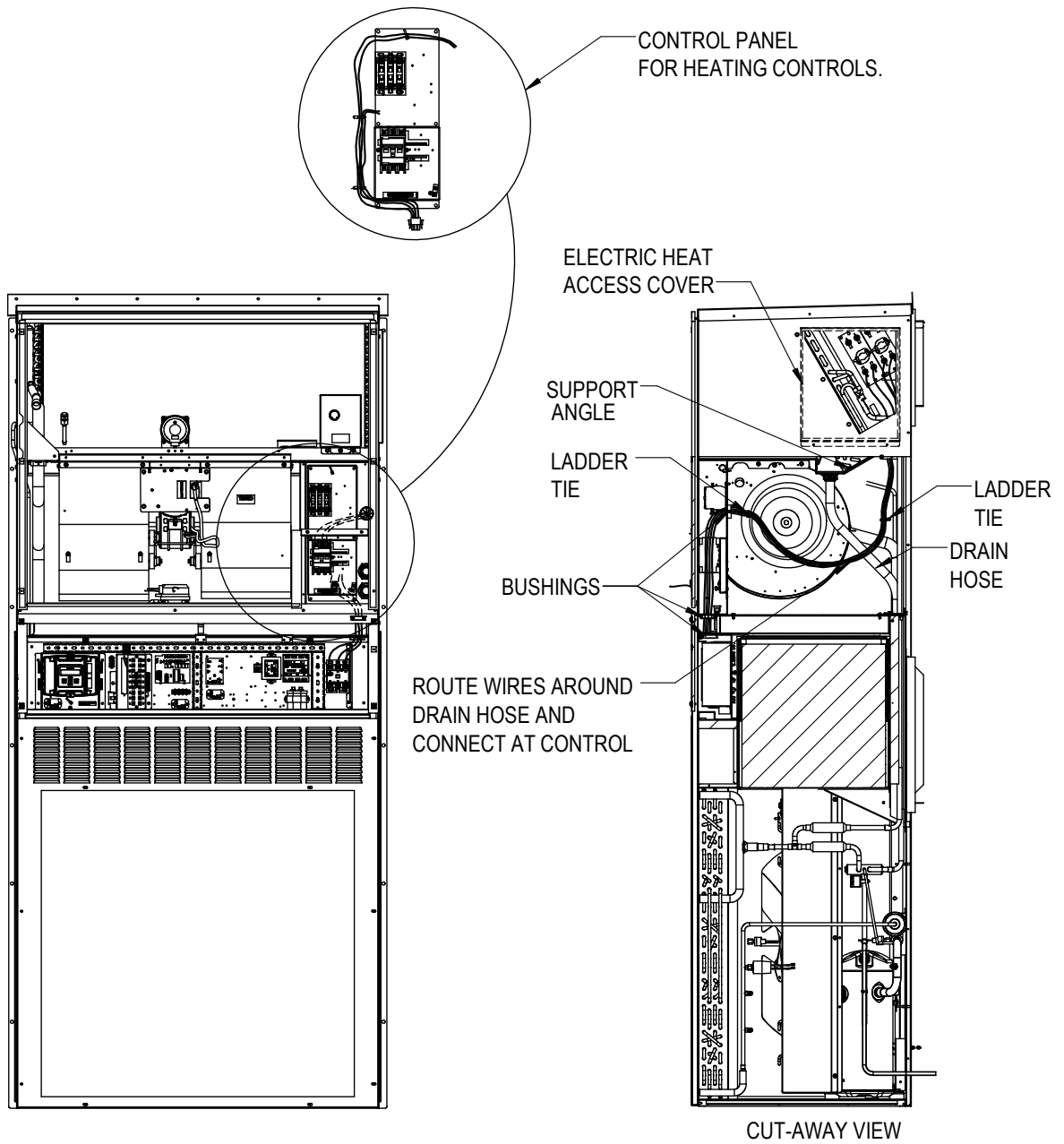
Install only heater packages listed on unit serial plate. Hazard of fire or electrical shock. Failure to install listed heater package could result in fire, injury or death.

3. Remove upper front door, electric heater access panel and control panel cover, both inner and outer (see Figure 2 on page 9).
4. All heaters are installed with the thermal cutoffs positioned to the top of the unit. Install heat strip(s) through heater access opening. Position heat strip support rod in heater support hole 1, 2 or 3 as indicated in Tables 2A and 2B on pages 10 and 11 and Figure 3 on page 12. Secure in place with two (2) sheet metal screws in mounting holes.

On heater packages with two heat strips, install 9KW or 10KW heater first in position closest to the outlet air frame (see Figures 4E and 4F on page 14).
5. Install heater control base into heating control area above control panel as shown in Figure 5 on page 15. Secure with four (4) sheet metal screws provided.
6. Plug male 4-pin connector into mating connector mounted in control panel (see Figure 5).

7. Connect red compressor supply lead to L1 of terminal block. Connect black compressor supply lead to L2 of terminal block. If three phase, connect yellow supply lead to L3 of terminal block. See Figure 5 and wiring diagram.
8. Route wires from heater control base up through raceway in top right corner of control panel to the heaters (see Figure 5).
9. Wire heater package per wiring diagram supplied with the heater package. All wires are stamped with wire numbers that correspond with terminal numbers on the wiring diagram and stamped numbers on the heat strip. Limit switch wires are terminated with insulated quick connect terminals. See Figure 5.
10. Attach adhesive wiring diagram directly above unit wiring diagram on inner control panel cover.
11. Recheck all wiring. Break out appropriate circuit breaker tabs on inner control panel cover to allow trip lever to protrude. Replace control panel and heater access panels.
12. Resupply power to the unit and check for proper operation.
13. Re-mark serial plate with self-adhesive label attached to the front of this manual (see Figure 6 on page 16).

FIGURE 2
Electric Heater Access Panel and Control Panel Cover Locations



MIS-4099 A

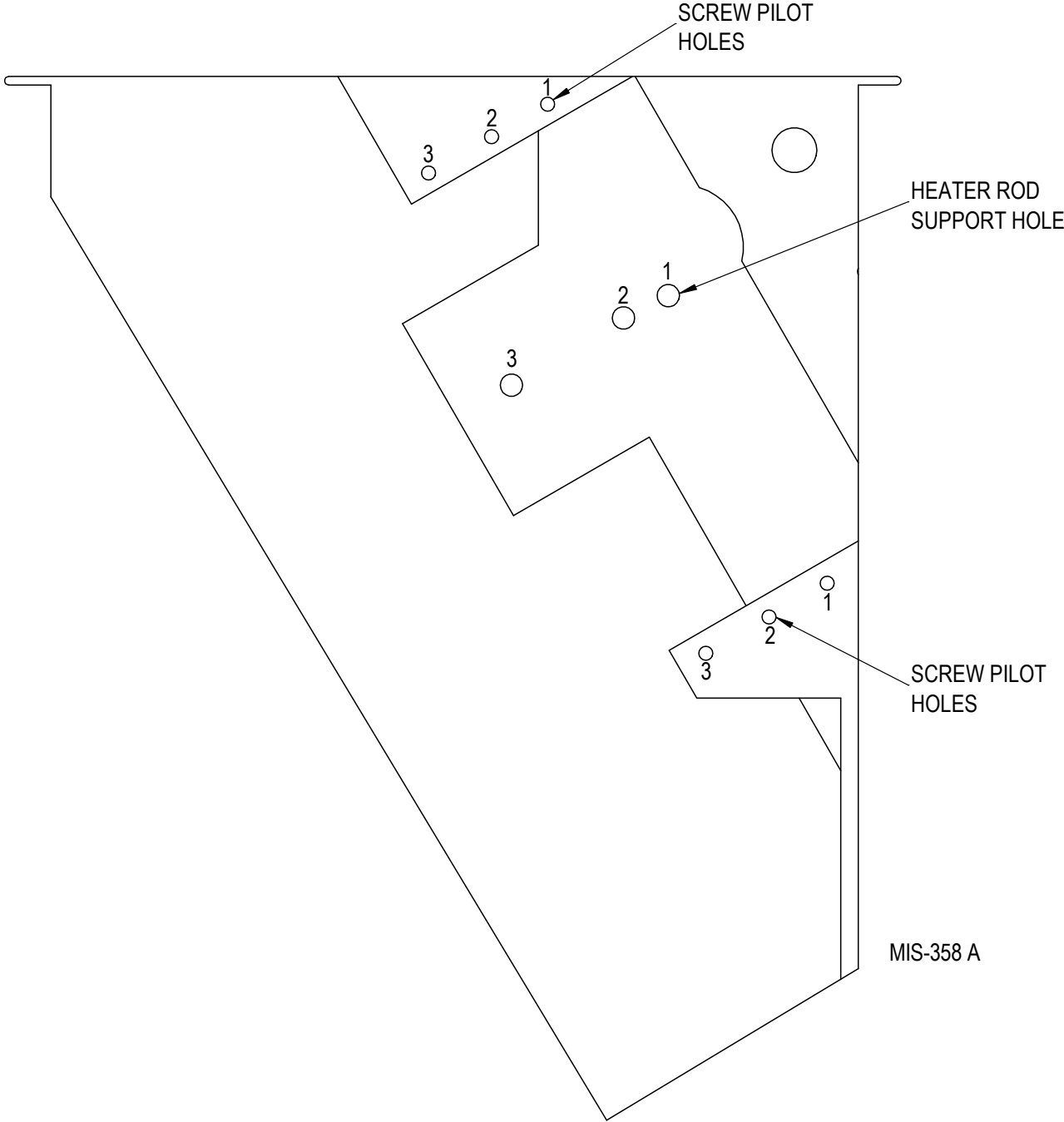
TABLE 2A
References to Figures 3 and 4 by Model Number – EHCH Series

Heater Package Model Number	Figure 3 Rod Support and Screw Mounting Position	Figure 4 Heater Terminal Identification Drawing
EHCH036A-A05	1	4A
EHCH036A-A10	1	4C
EHCH036A-A15	1 + 3	4D
EHCH036A-B05	1	4B
EHCH036A-B09	1	4B
EHCH036B-B09	1	4B
EHCH036A-B15	1 + 3	4E
EHCH036A-C05	1	4B
EHCH036A-C09	1	4B
EHCH036A-C15	1 + 3	4E
EHCH042A-A05	1	4A
EHCH042A-A10	1	4C
EHCH042A-B05	1	4B
EHCH042A-B09	1	4B
EHCH042A-B15	1 + 3	4E
EHCH048A-A05	1	4A
EHCH048A-A10	1	4C
EHCH048A-A15	1 + 3	4D
EHCH048A-B05	1	4B
EHCH048A-B09	1	4B
EHCH048A-B15	1 + 3	4E
EHCH048A-C05	1	4B
EHCH048A-C09	1	4B
EHCH048A-C15	1 + 3	4E
EHCH060A-A05	1	4A
EHCH060A-A10	1	4C
EHCH060A-A15	1 + 3	4D
EHCH060B-A05	1	4A
EHCH060B-A10	1	4C
EHCH060B-A15	1 + 3	4D
EHCH060A-A20	1 + 3	4F
EHCH060A-B05	1	4B
EHCH060A-B09	1	4B
EHCH060A-B15	1 + 3	4E
EHCH060A-C05	1	4B
EHCH060A-C09	1	4B
EHCH060A-C15	1 + 3	4E

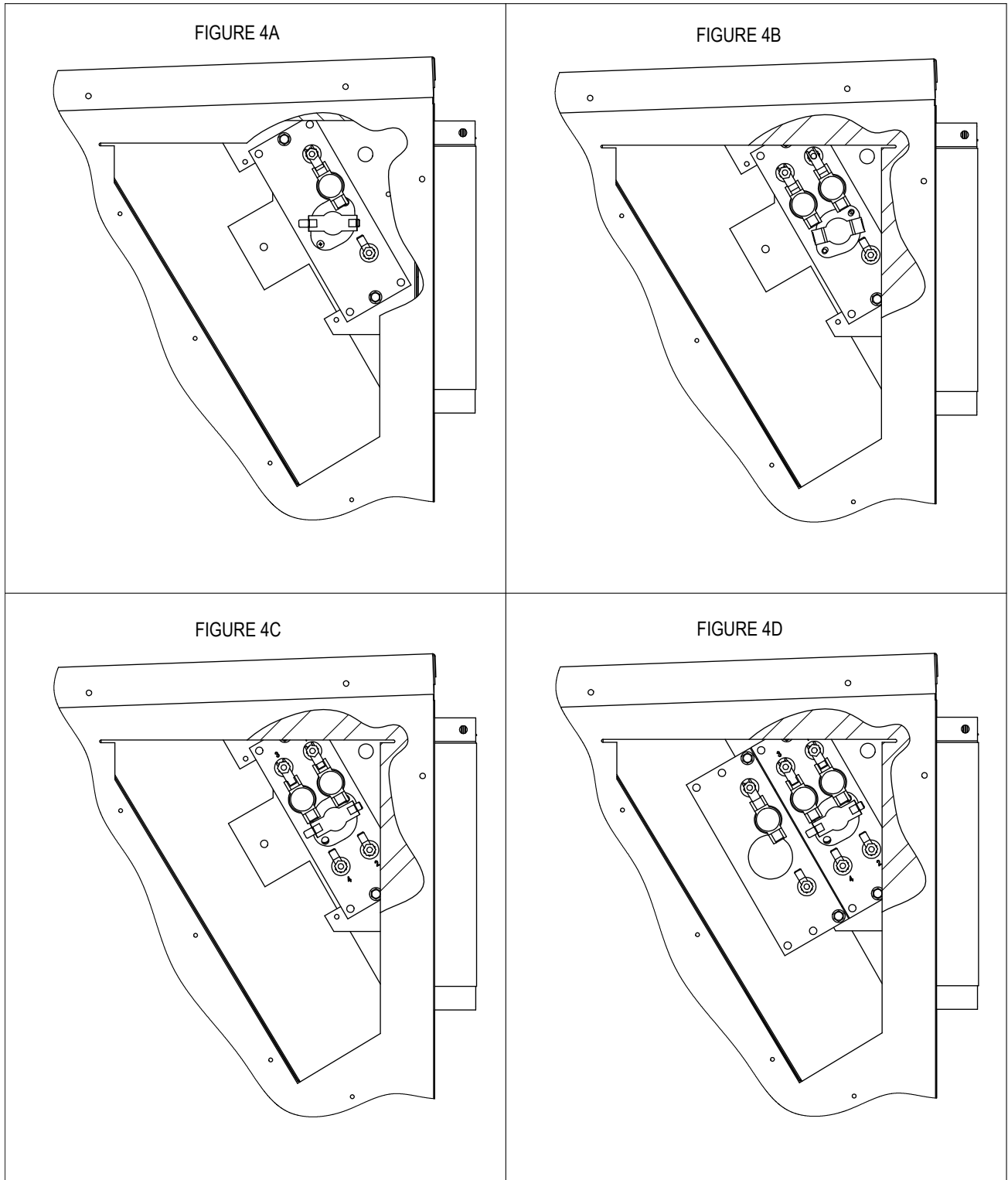
TABLE 2B
References to Figures 3 and 4 by Model Number – EHVH/EHWH Series

Heater Package Model Number	Figure 3 Rod Support and Screw Mounting Position	Figure 4 Heater Terminal Identification Drawing
EHVH036A-R05	1	4A
EHVH036A-R10	1	4C
EHVH036A-S05	1	4B
EHVH036A-S09	1	4B
EHVH036A-S15	1 + 3	4E
EHVH036ADS09	1	4B
EHVH036B-R05	1	4A
EHVH036B-R10	1	4C
EHVH036B-R15	1+3	4D
EHVH036B-S05	1	4B
EHVH036B-S09	1	4B
EHVH036B-S15	1+3	4E
EHVH036B-T05	1	4B
EHVH036B-T09	1	4B
EHVH036B-T15	1+3	4E
EHVH060A-S05	1	4B
EHVH060ADR05	1	4A
EHVH060ADR10	1	4C
EHVH060ADR15	1 + 3	4D
EHVH060B-R05	1	4A
EHVH060B-R10	1	4C
EHVH060B-R15	1+3	4D
EHVH060B-S05	1	4B
EHVH060B-S09	1	4B
EHVH060B-S15	1+3	4E
EHVH060B-T05	1	4B
EHVH060B-T09	1	4B
EHVH060B-T15	1+3	4E
EHWH042A-A05	1	4A
EHWH042A-A10	1	4C
EHWH042A-A15	1 + 3	4D
EHWH042B-A10	1	4C
EHWH042B-A15	1 + 3	4D
EHWH042A-B05	1	4B
EHWH048A-A04	1	4A
EHWH048A-A05	1	4A
EHWH048A-A10	1	4C
EHWH048A-A15	1 + 3	4D
EHWH060A-A10	1	4C
EHWH060A-A15	1 + 3	4D
EHWH060A-B15	1 + 3	4E
EHWH060A-Q15	1 + 3	4E

FIGURE 3
Screw Mounting Holes

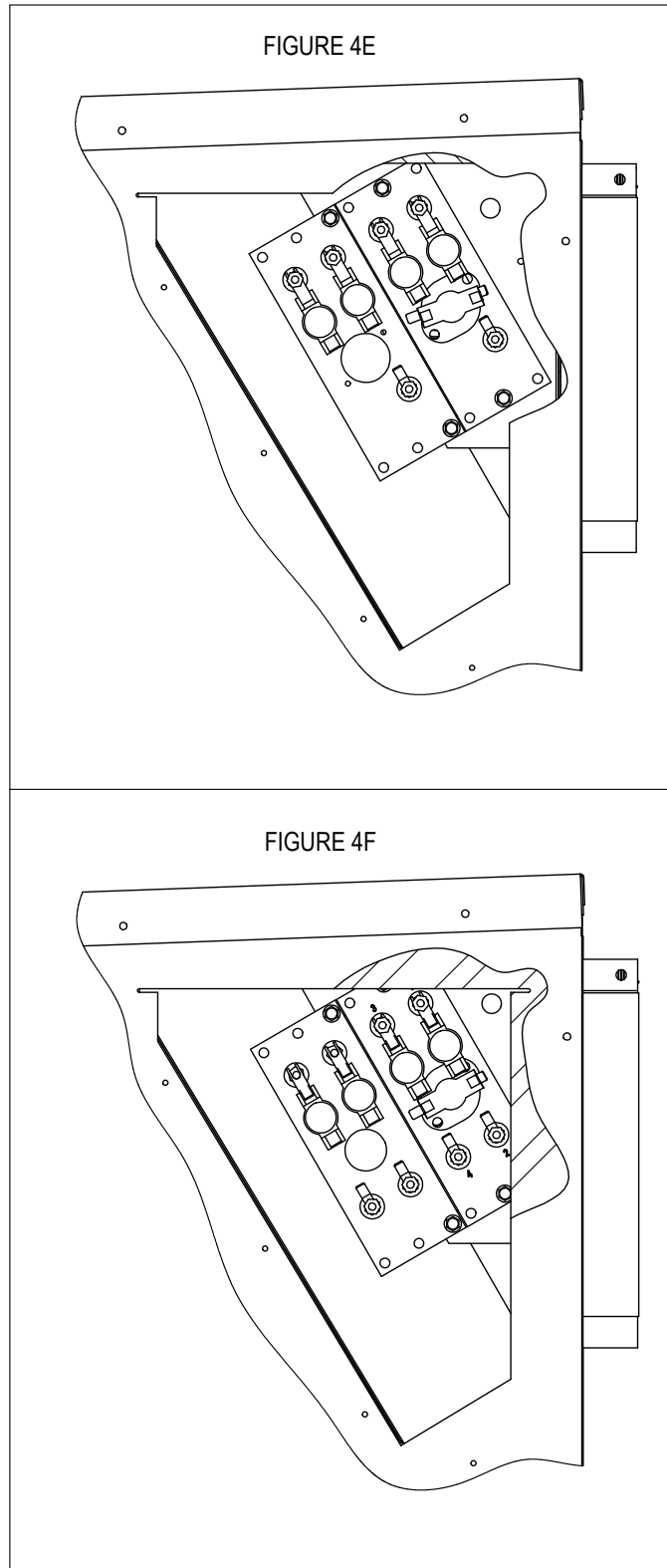


**FIGURE 4
A Through D**



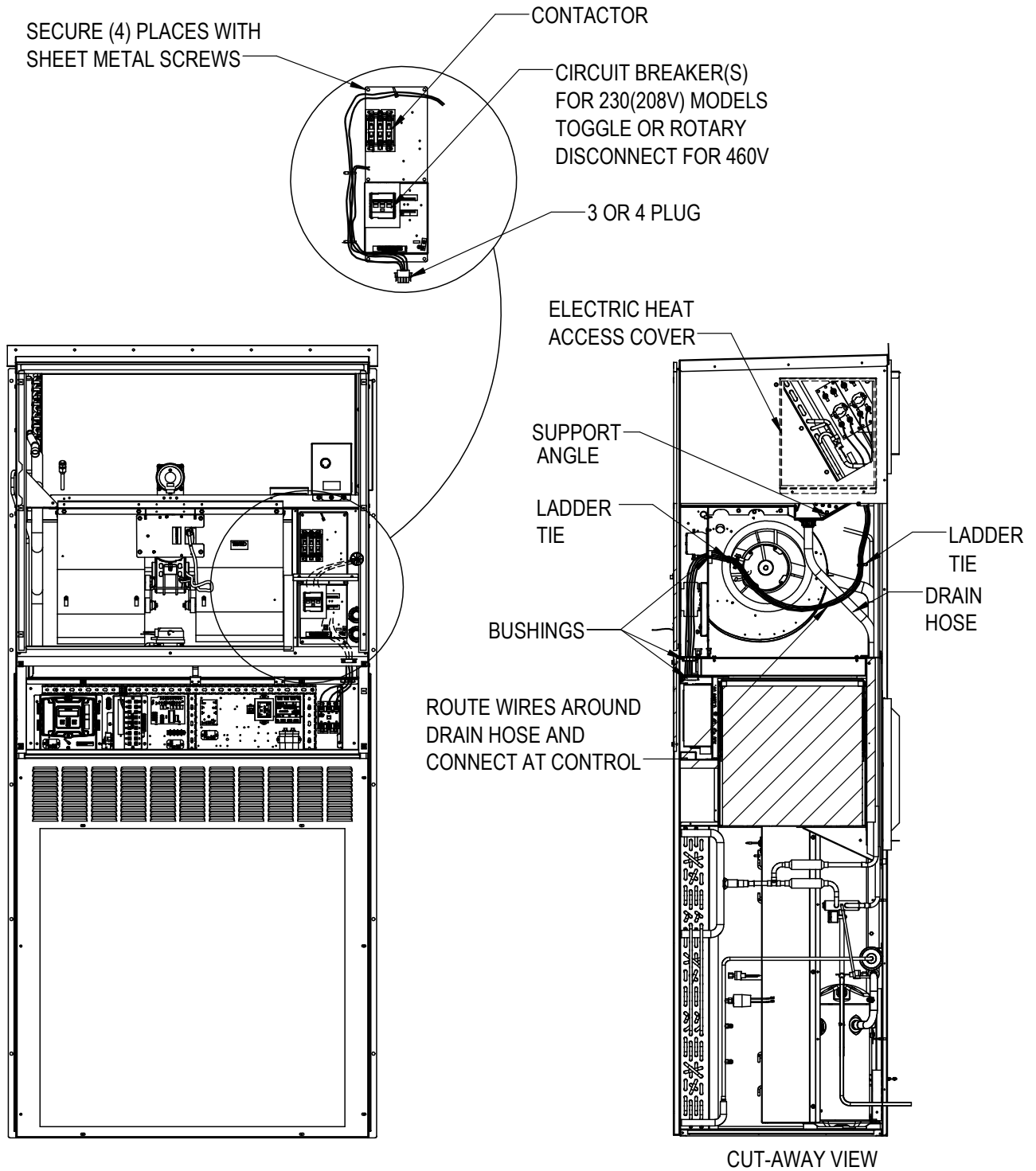
MIS-4422 A

FIGURE 4
E and F



MIS-4423 A

FIGURE 5
Installing Heater Base
and Connecting Wiring



MIS-4468

FIGURE 6
Serial Plate Showing
Approved Heater Packages

INSTALL ONLY HEATER PACKAGES LISTED HERE

BARD MANUFACTURING CO. INC., 1914 RANDOLPH DRIVE

(1)
 APPROVED
 HEATER

MODEL	PACKAGE	VAC~	HZ	PH
() C36HY-A00	NONE	230/208	60	1
() C36HY-A0Z	WMCBC-04A	230/208	60	1
(X) C36HY-A05	EHCH036A-A05	230/208	60	1
() C36HY-A10	EHCH036A-A10	230/208	60	1
() C36HY-A15	EHCH036A-A15	230/208	60	1

SHORT-CIRCUIT CURR
 BRANCH CIRCUIT SELECT CURRENT 14.1A OPER

SERIAL NUMBER XXXXXXXXXXXXXXXX-XX

SUITABLE FOR PARTIAL OUTDOOR EXPOSURE IN THROUGH THE WALL
 ALL MOTORS ARE THERMALLY PROTECTED

	VAC	HZ	PH	HP	FLA
COMPRESSOR	230/208	60	1		
OUTDOOR MOTOR	230/208	60	1	1/3	1.9
INDOOR MOTOR	230/208	60	1	1/2	1.4
ERV	230/208	60	1		2.2 (C
HEATER PACKAGE				KW	FLA
EHCH036A-A05	230/208	60	1	4.6/3.8	20.0/16
EHCH036A-A10	230/208	60	1	9.2/7.5	40.0/32
EHCH036A-A15	230/208	60	1	13.8/11.3	60.0/50

ASSURE THAT SERIAL PLATE IS CLEAN AND DRY, REMOVE APPROPRIATE LABEL STRIP FOR KW REQUIRED AND REMARK SERIAL PLATE AS SHOWN FOR THE HEATER PACKAGE THAT IS INSTALLED

MIS-384 A