
REPLACEMENT PARTS MANUAL

Wall Mounted Packaged Air Conditioner

Models:

W12AF-A W12AF-K

General Notes

- Revised and/or additional pages may be issued from time to time.
- A complete and current manual consists of pages shown in the following contents section.

Important

- Contact the installing and/or local Bard distributor for all parts requirements. Make sure to have the complete model and serial number available from the unit rating plates.

Contents

| Description | Page |
|--|------|
| Cabinet Components | |
| ♦ Exploded View..... | 2 |
| ♦ Usage List | 3 |
| Functional Components | |
| ♦ Exploded View..... | 4 |
| ♦ Usage List | 5 |
| Control Panel (Circuit Breaker Option) | |
| ♦ Layout View | 6 |
| ♦ Usage List | 7 |
| Blower Assembly | |
| ♦ Exploded View..... | 8 |
| ♦ Usage List | 8 |

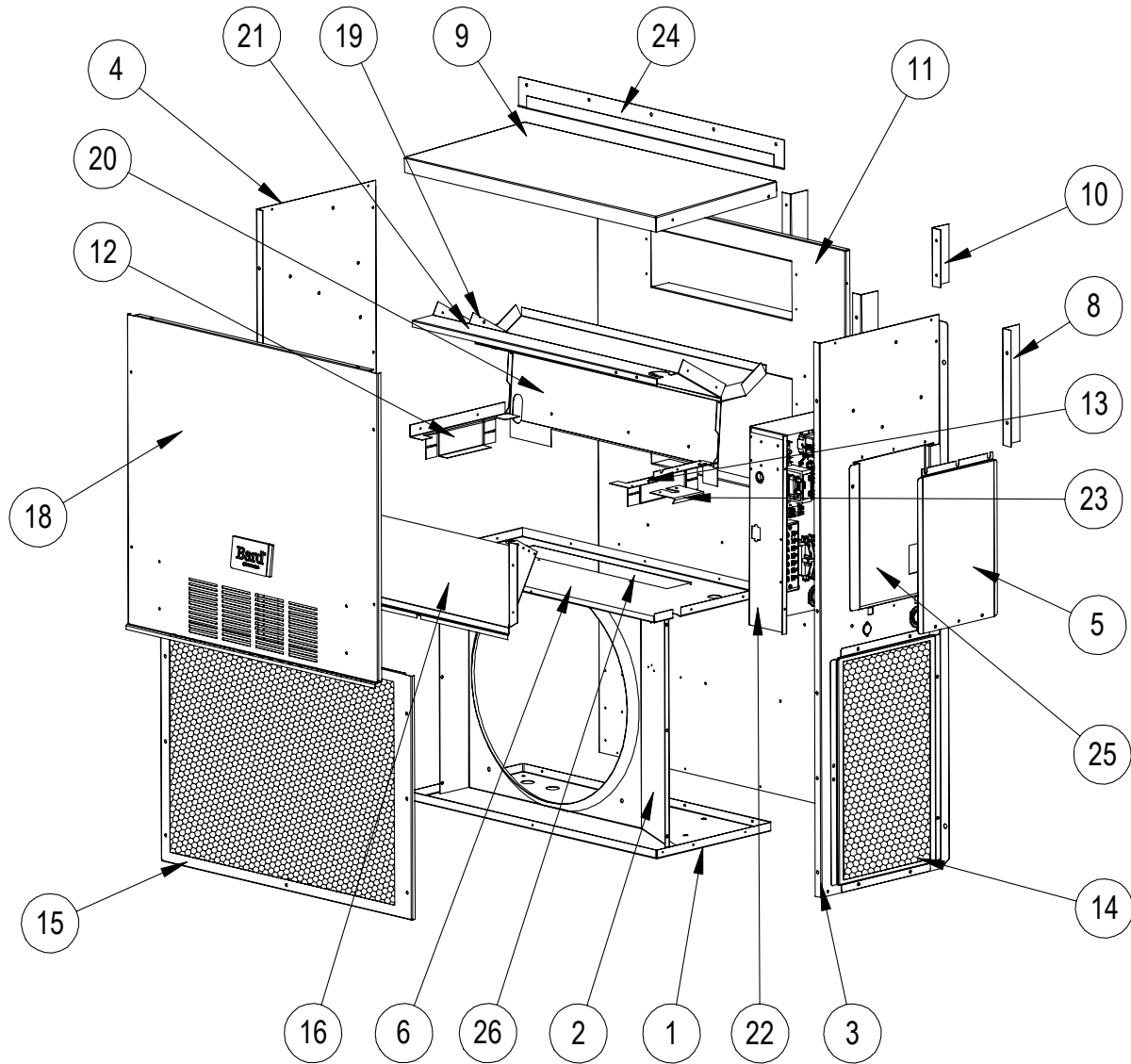


Climate Control Solutions

Bard Manufacturing Company, Inc.
Bryan, Ohio 43506
www.bardhvac.com

Manual: 2110-1493C
Supersedes: 2110-1493B
Date: 9-23-25

CABINET COMPONENTS



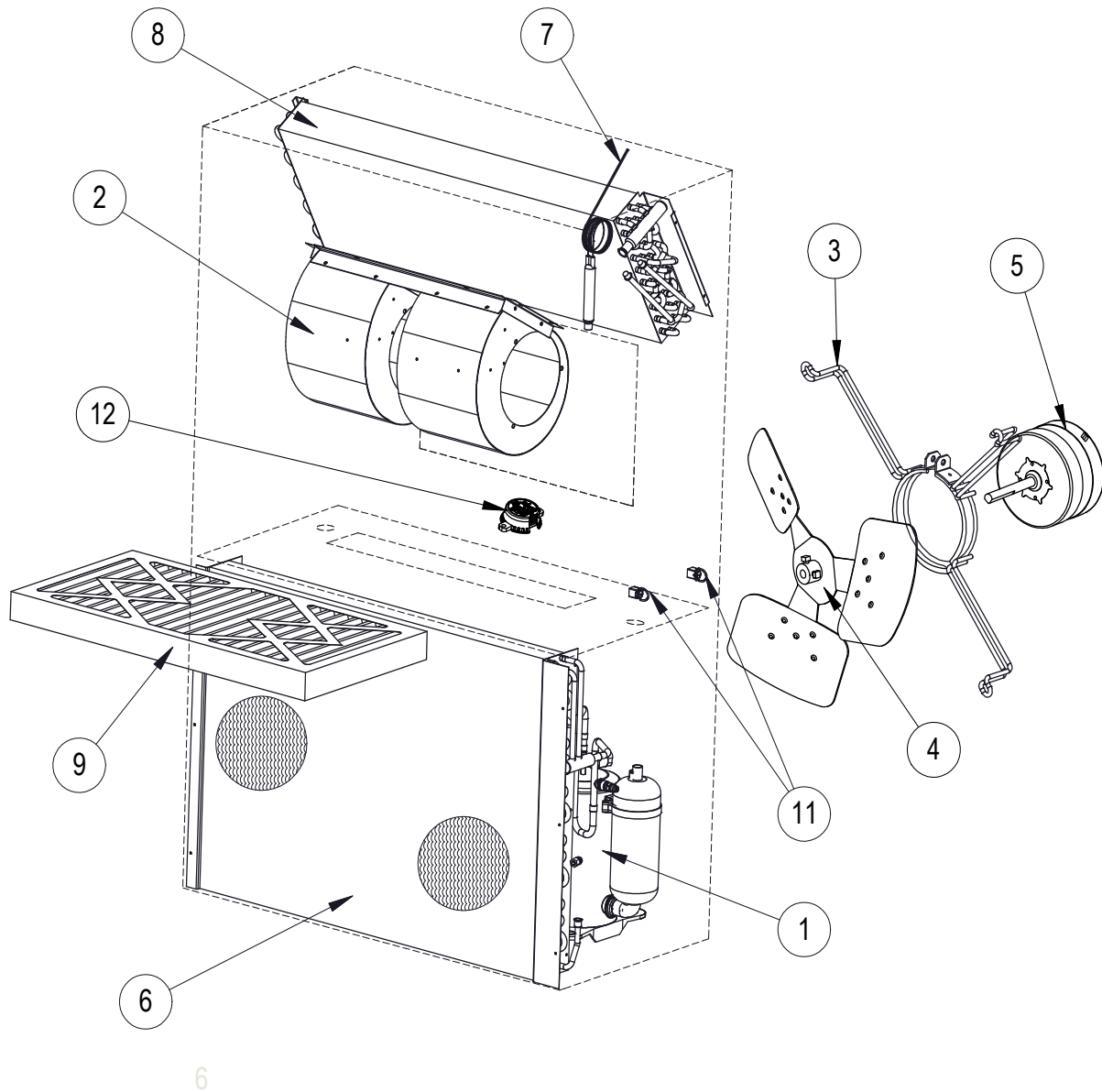
SEXP-724 A

CABINET COMPONENTS

| Drawing No. | Part No. | Description | W12AF-A | W12AF-K |
|-------------|------------------------|---|---------|---------|
| 1 | 127-491BX | Lower Base | X | X |
| 2 | 125-071BX | Fan Shroud | X | X |
| 3 | 501-1224-*BX ① | Right Side | X | X |
| 4 | 501-1223-*BX ① | Left Side | X | X |
| 5 | 133-264-*BX ① | Control Panel Cover (Outer) | X | X |
| 6 | 520-243BX | Condenser Partition | X | X |
| 8 | 111-214BX | Return Air Frame Angle | 2 | 2 |
| 9 | 506-148-*BX ① | Top | X | X |
| 10 | 111-036BX | Outlet Air Frame Angle | 2 | 2 |
| 11 | 509-325BX | Back | X | X |
| 12 | 113-529BX | Left Filter Bracket | X | X |
| 13 | 113-532BX | Right Filter Bracket | X | X |
| 14 | 118-095-*BX ① | Side Grille | 2 | 2 |
| 15 | 118-096-*BX ① | Condenser Grille | X | X |
| 16 | BFAD-1 | Fresh Air Damper Assembly | X | X |
| 18 | 514-295-*BX ① | Upper Front | X | X |
| 19 | 113-176BX | Heater Bracket | X | X |
| 20 | 121-504BX | Return Partition | X | X |
| 21 | 121-602BX | Drain Pan | X | X |
| 22 | Control Panel Assembly | See Control Panel Assembly Drawing and Parts List | X | X |
| 23 | 135-138BX | Fill Plate | X | X |
| 24 | 113-178-*BX ① | Top Rain Flashing | X | X |
| 25 | 133-377-*BX ① | Control Panel Cover (Inner) | X | |
| 25 | 133-378-*BX ① | Control Panel Cover (Inner) | | X |
| 26 | 536-252BX | Condenser Blank-Off Plate | X | X |

① Exterior cabinet parts are manufactured with various paint color options. To ensure the proper paint color is received, reference the following codes: Beige -X, White -1, Gray -4, Desert Brown -5, Dark Bronze -8

FUNCTIONAL COMPONENTS



SEXP-725 A

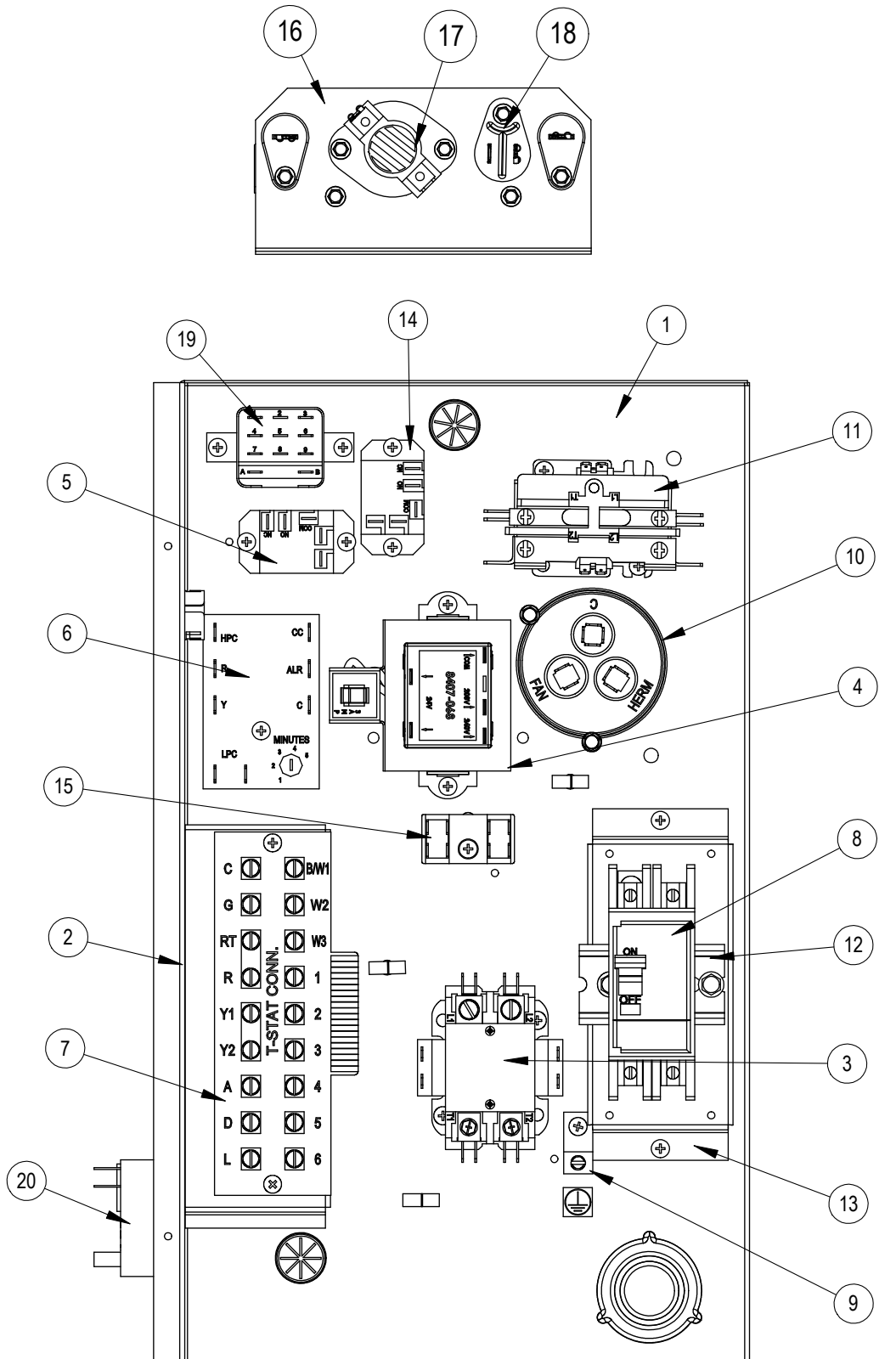
FUNCTIONAL COMPONENTS

| Drawing No. | Part No. | Description | W12AF-A | W12AF-K |
|-------------|------------|--|---------|---------|
| 1 | 8000-565BX | Compressor | X | |
| 1 | 8000-566BX | Compressor | | X |
| 2 | 900-374BX | Blower Assembly 240V | X | |
| 2 | 900-379BX | Blower Assembly 115V | | X |
| 3 | 8200-001BX | Fan Motor Mount | X | X |
| 4 | 5151-059BX | Fan Blade | X | X |
| 5 | 8101-031BX | Condenser Motor 240V | X | |
| 5 | 8101-032BX | Condenser Motor 115V | | X |
| 6 | 5051-194BX | Condenser Coil | X | X |
| 7 | 800-0520BX | Cooling Capillary Assembly | X | |
| 7 | 800-0521BX | Cooling Capillary Assembly | | X |
| 8 | 5060-193BX | Evaporator Coil | X | X |
| 9 | 7003-073 | Air Filter 1" Washable | X | X |
| 9 | 7004-056 | Air Filter 1" Throw Away ① | X | X |
| 9 | 7004-057 | Air Filter 2" Pleated MERV8 ① | X | X |
| 9 | 7004-072 | Air Filter 2" MERV13 ① | X | X |
| 11 | 1171-066 | #82 1/4 Turn Fastener | X | X |
| 11 | 1171-065 | #82 Receptacle | X | X |
| 11 | 1171-064 | Retainer Clip | X | X |
| 12 | 8301-110BX | Refrigerant Detection Sensor | X | X |
| NS | 8406-170BX | High Pressure Switch (Screw On) | X | X |
| NS | 8406-166BX | Low Pressure Switch (Screw On) | X | X |
| NS | CMA-39 | Low Ambient Control Service Kit (Flare) ① | X | X |
| NS | 8402-237BX | Compressor Overload | X | |
| NS | 8402-238BX | Compressor Overload | | X |
| NS | 5201-021BX | Filter Drier | X | X |
| NS | 6031-009 | Coremax Valve Core | X | X |
| NS | 8408-048BX | Freeze Stat (Part of CMA-39 LAC Kit) | X | X |
| NS | 8408-055BX | Outdoor Thermostat (Part of CMA-39 LAC Kit) | X | X |
| NS | 8406-112BX | Low Ambient Control (Part of CMA-39 LAC Kit) | X | X |

NS – Not Shown

① – Optional on these models

CONTROL PANEL (CIRCUIT BREAKER OPTION)



SEXP-998 B

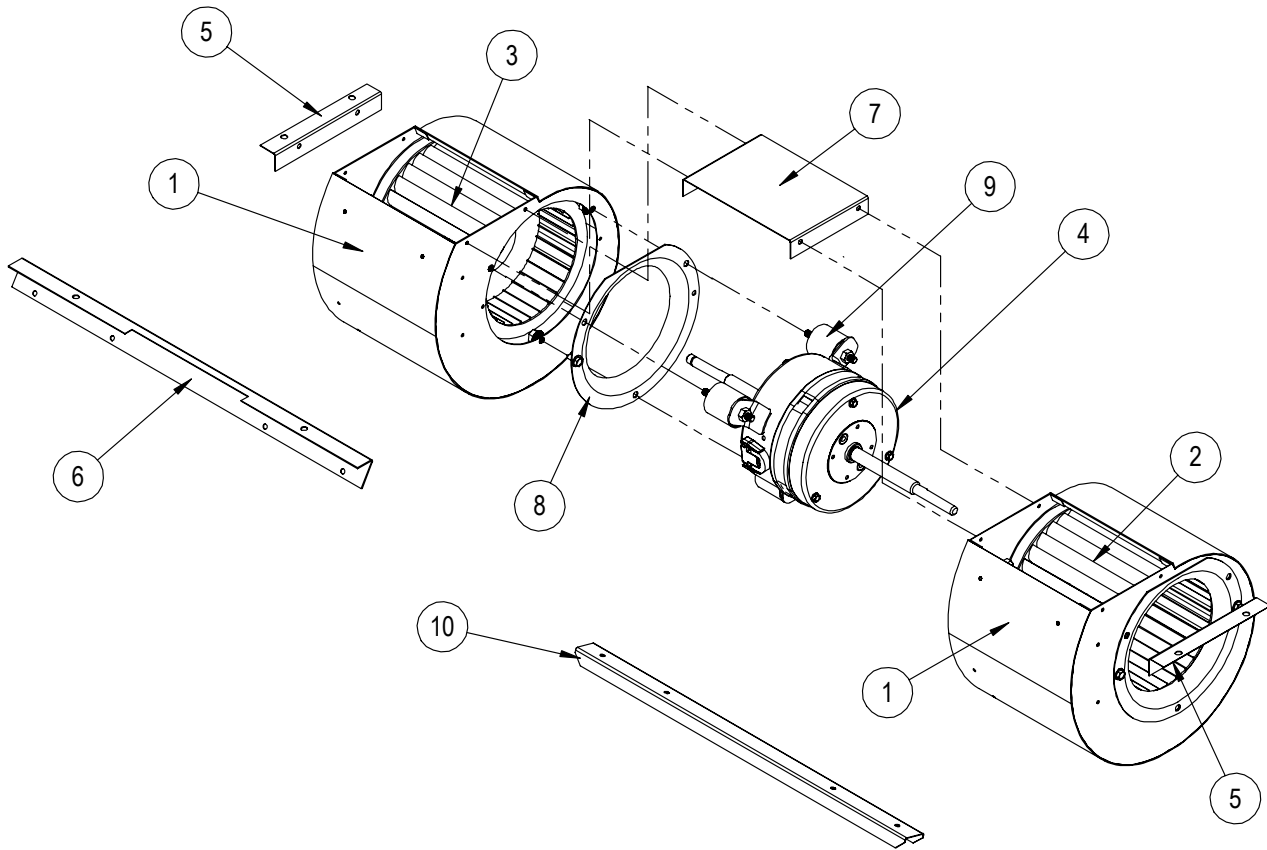
CONTROL PANEL (CIRCUIT BREAKER OPTION)

| Drawing No. | Part No. | Description | W12AF-A0Z | W12AF-A03 | W12AF-A05 | W12AF-K00 | W12AF-K02 |
|-------------|------------|---|-----------|-----------|-----------|-----------|-----------|
| 1 | 117-462BX | Control Panel | X | X | X | X | X |
| 2 | 117-416BX | Low Voltage Box | X | X | X | X | X |
| 3 | 8401-033BX | Compressor Contactor | X | X | X | X | X |
| 4 | 8407-068BX | Transformer | X | X | X | | |
| 4 | 8407-045BX | Transformer | | | | X | X |
| 5 | 8201-130BX | Blower Control Relay | X | X | X | X | X |
| 6 | 8201-176BX | Compressor Control Module | X | X | X | X | X |
| 7 | 8607-063BX | Low Voltage Terminal Strip | X | X | X | X | X |
| 8 | 8615-060BX | Circuit Breaker 15A 2 pole 240V | X | | | | |
| 8 | 8615-036BX | Circuit Breaker 25A 2 pole 240V | | X | | | |
| 8 | 8615-037BX | Circuit Breaker 30A 2 pole 240V | | | X | | |
| 9 | 8611-281BX | Ground Terminal | X | X | X | X | X |
| 10 | 8552-050BX | Compressor Capacitor | X | X | X | | |
| 10 | 8552-062BX | Compressor Capacitor | | | | X | X |
| 11 | 8401-033BX | Heat Contactor | | X | X | | X |
| 12 | 113-943BX | DIN Rail | X | X | X | | |
| 13 | 127-546BX | Circuit Breaker Offset | X | X | X | | |
| 14 | 8201-130BX | Alarm Relay ① | X | X | X | X | X |
| 15 | 8607-017BX | Terminal Block ① (Shown) | X | X | X | X | X |
| 16 | 8604-166BX | Heat Strip 3KW with Limit and Thermal Cut Off | | X | | | |
| 16 | 8604-167BX | Heat Strip 5KW with Limit and Thermal Cut Off | | | X | | |
| 16 | 8604-168BX | Heat Strip 2KW with Limit and Thermal Cut Off | | | | | X |
| 17 | 8402-188BX | Limit | | X | | | |
| 17 | 8402-074BX | Limit | | | X | | |
| 17 | 8402-205BX | Limit | | | | | X |
| 18 | 8402-202BX | Thermal Cut Off | | X | | | |
| 18 | 8402-204BX | Thermal Cut Off | | | X | | |
| 18 | 8402-203BX | Thermal Cut Off | | | | | X |
| 19 | 8201-159BX | Blower Control Relay | X | X | X | X | X |
| 20 | 8401-036BX | RDS Relay | X | X | X | X | X |
| NS | 4213-136 | Wiring Diagram | X | | | | |
| NS | 4213-137 | Wiring Diagram | | X | X | | |
| NS | 4213-138 | Wiring Diagram | | | | X | |
| NS | 4213-139 | Wiring Diagram | | | | | X |

NS – Not Shown

① – Optional on these models

BLOWER ASSEMBLY



SEXP-999 A

| Drawing No. | Part No. | Description | 900-374 | 900-379 |
|-------------|------------|------------------------|---------|---------|
| 1 | 151-114BX | Blower Housing * | 2 | 2 |
| 2 | 5152-084BX | Wheel (CW) Right | X | X |
| 3 | 5152-085BX | Wheel (CCW) Left | X | X |
| 4 | 8101-030BX | Blower Motor (230/208) | X | |
| 4 | 8101-033BX | Blower Motor (115) | | X |
| 5 | 105-908BX | Side Angle | 2 | 2 |
| 6 | 105-1473BX | Front Brace | X | X |
| 7 | 141-507BX | Center Blower Support | X | X |
| 8 | 144-180BX | Inlet Ring | 4 | 4 |
| 9 | 5451-033BX | Mounting Grommet | 3 | 3 |
| 10 | 164-614BX | Blower Support Channel | X | X |

* Replace with new rings