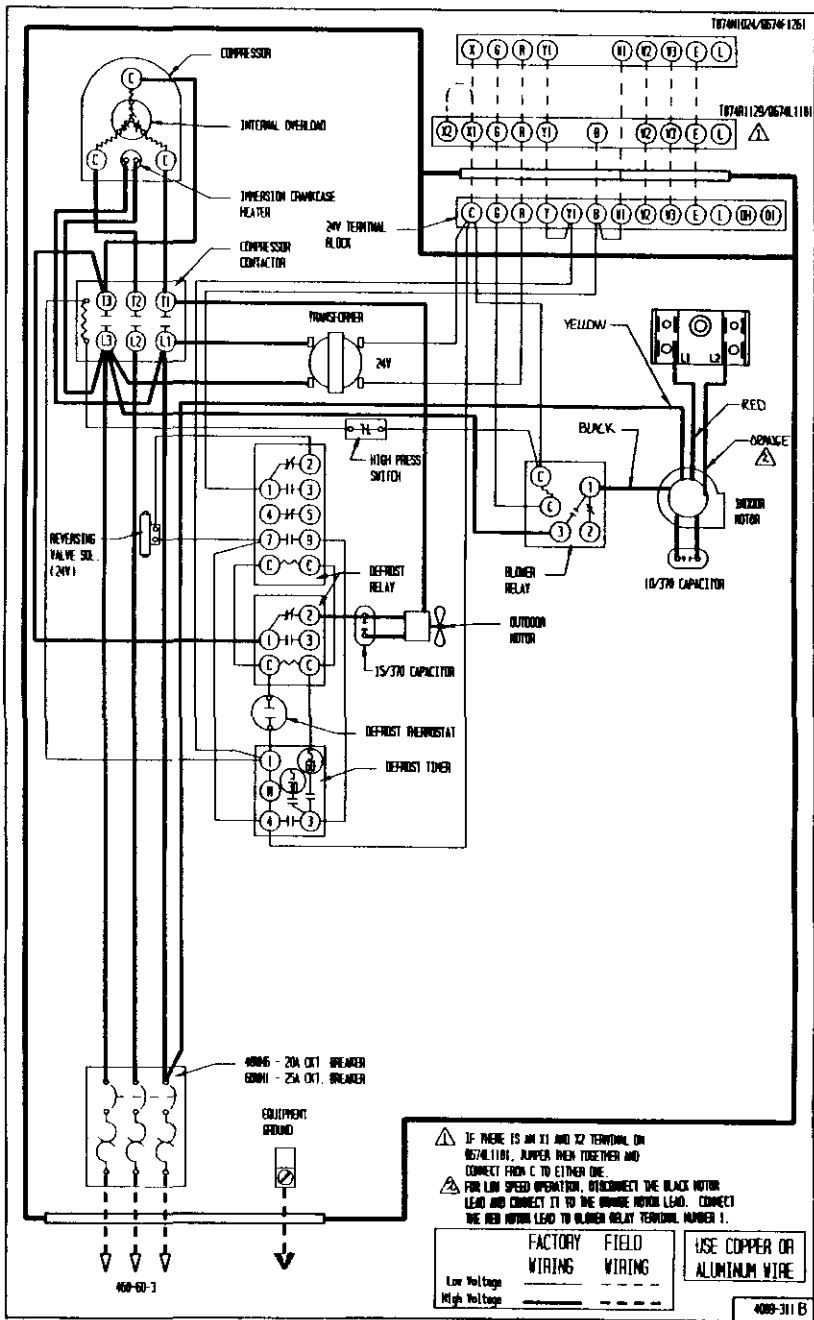


T07401024/0574F1261

T07401129/0574F1181



- ⚠ IF THERE IS AN X1 AND X2 TERMINAL ON INSTALLING, JUMPER THEM TOGETHER AND CONNECT FROM C TO EITHER ONE.
- ⚠ FOR LOW SPEED OPERATION, DISCONNECT THE BLACK MOTOR LEAD AND CONNECT IT TO THE GROUND MOTOR LEAD. CONNECT THE RED MOTOR LEAD TO BLOWER RELAY TERMINAL NUMBER 1.

	FACTORY WIRING	FIELD WIRING
Low Voltage	—————	-----
High Voltage	—————	-----

USE COPPER OR ALUMINUM WIRE

400-311B