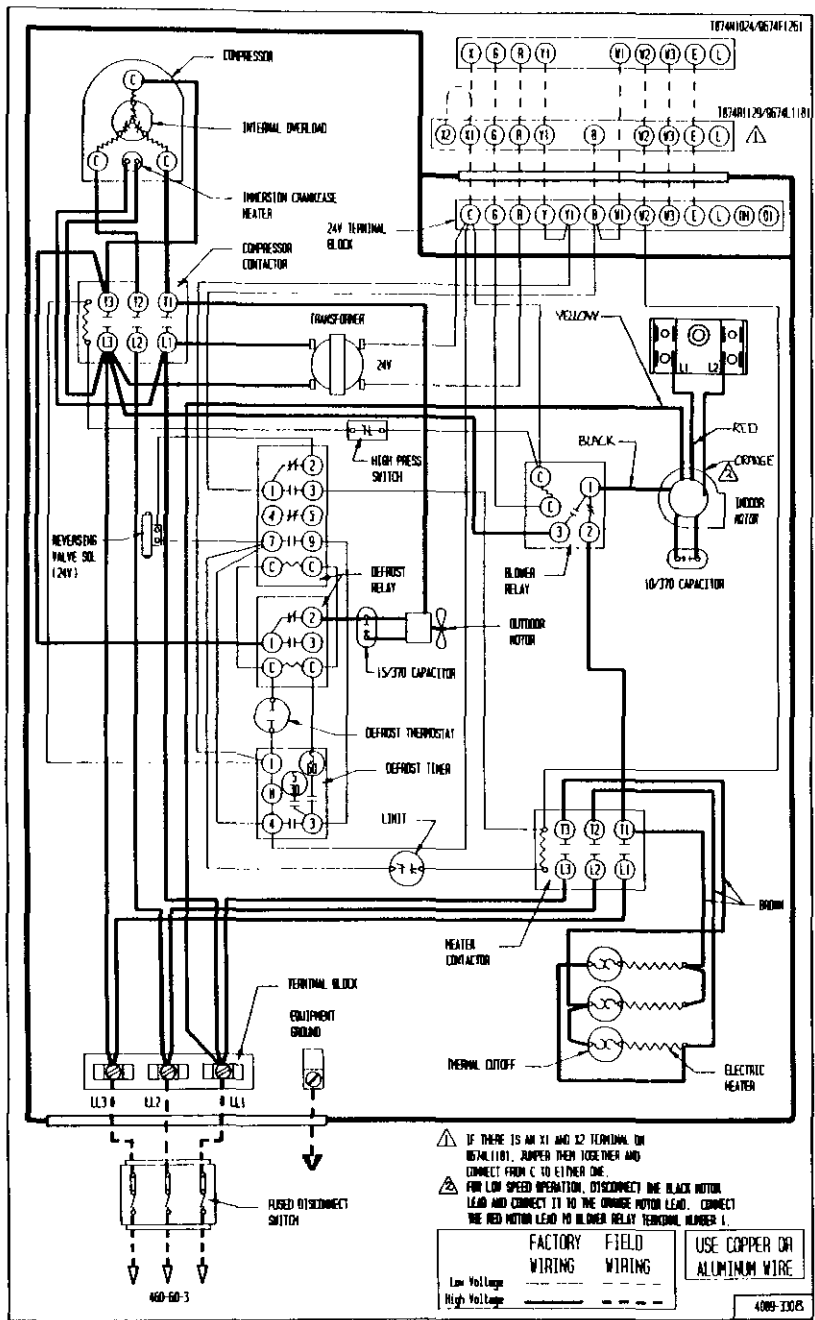


1874H1024/0674F1251

1874H129/0674F1181



- ⚠ IF THERE IS AN X1 AND X2 TERMINAL ON INSTALLATION, JUMPER THEM TOGETHER AND CONNECT FROM C TO EITHER ONE.
- ⚠ FOR LOW SPEED OPERATION, DISCONNECT THE BLACK MOTOR LEAD AND CONNECT IT TO THE ORANGE MOTOR LEAD. CONNECT THE RED MOTOR LEAD TO BLOWER RELAY TERMINAL NUMBER 1.

	FACTORY WIRING	FIELD WIRING
Low Voltage	_____	_____
High Voltage	_____	_____

USE COPPER OR ALUMINUM WIRE.

4089-100B

660-60-3