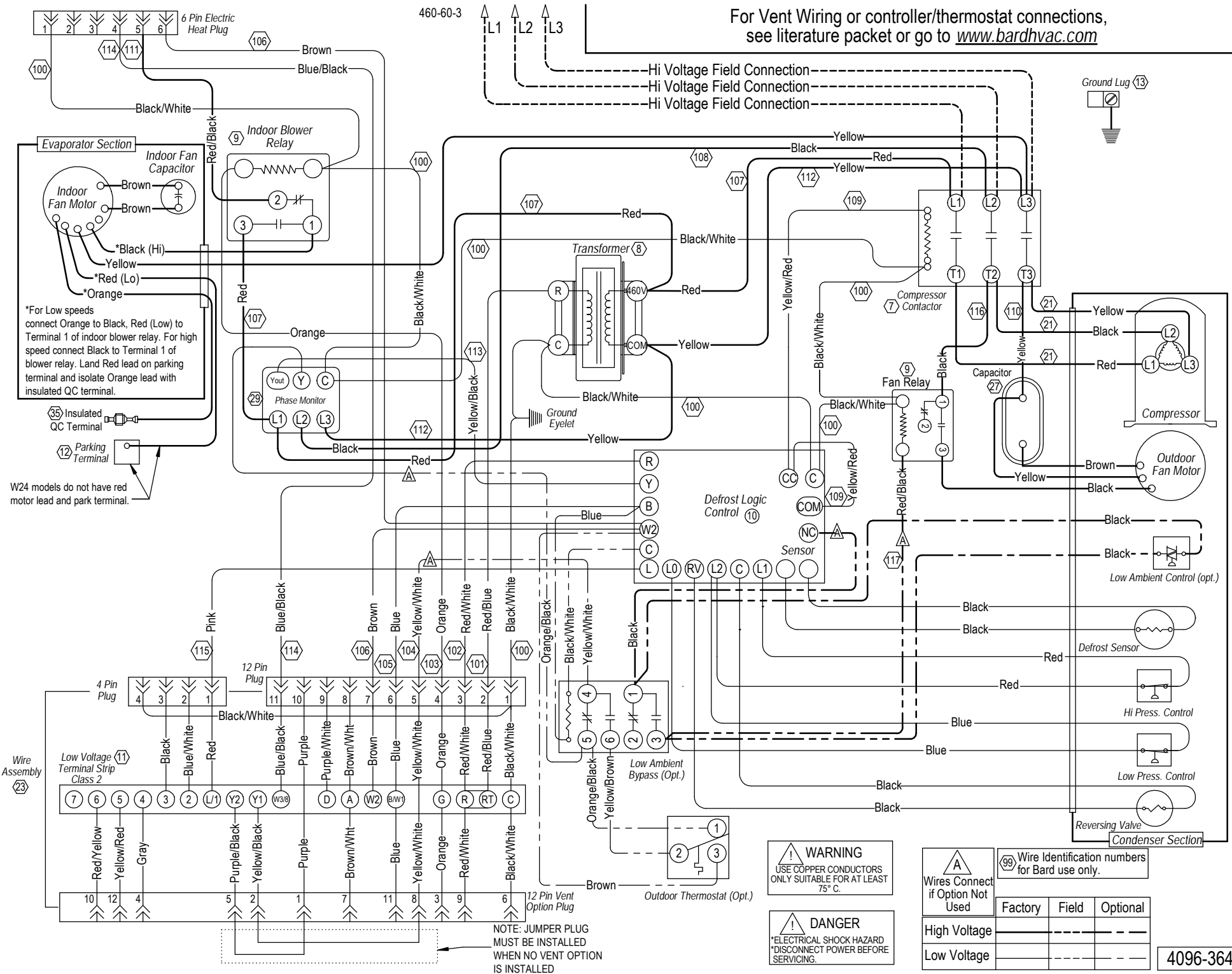


For Vent Wiring or controller/thermostat connections, see literature packet or go to www.bardhvac.com



*For Low speeds connect Orange to Black, Red (Low) to Terminal 1 of indoor blower relay. For high speed connect Black to Terminal 1 of blower relay. Land Red lead on parking terminal and isolate Orange lead with insulated QC terminal.

(35) Insulated QC Terminal

(12) Parking Terminal
W24 models do not have red motor lead and park terminal.

Wire Assembly (23)

Low Voltage Terminal Strip Class 2 (11)

12 Pin Vent Option Plug

NOTE: JUMPER PLUG MUST BE INSTALLED WHEN NO VENT OPTION IS INSTALLED

WARNING
USE COPPER CONDUCTORS ONLY SUITABLE FOR AT LEAST 75° C.

DANGER
ELECTRICAL SHOCK HAZARD DISCONNECT POWER BEFORE SERVICING.

(99) Wire Identification numbers for Bard use only.

Wires Connect if Option Not Used	Factory	Field	Optional
High Voltage			
Low Voltage			

4096-364 D