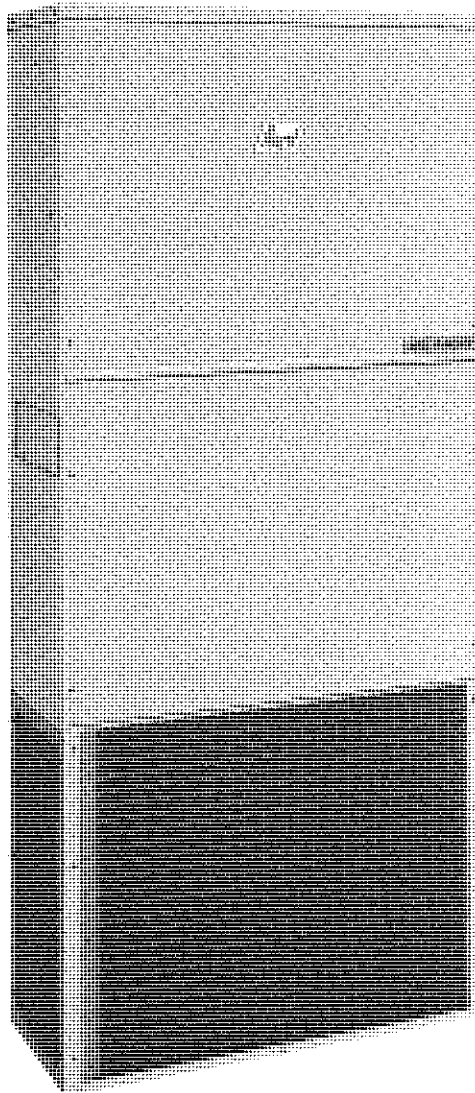




MODULAR MASTER™ WALL-MOUNT AIR CONDITIONERS

Cooling Capacities: 28,600 to 35,000 BTUH

SEER: 8.50 to 9.00



The Modular Master™ is a compact version of Bard's standard wall mount units. Even though it's physically smaller, its performance, versatility, price and ease of installation make these units ideal for mobile modular structures.

This practical, outside wall-mount air conditioner was designed primarily for the mobile modular manufacturing industry. The streamlined construction reduces weight, size, and improves appearance. Leave it to Bard, the wall mount experts, to give mobile modular manufacturers what they asked for.

Aluminum finned copper coil surfaces provide maximum transfer.

Twin blowers designed with direct drive motor. Motor overload protection is standard on all models.

Totally enclosed compressor operates quieter than others. Protected with internal overload, pressure relief valve and anti-slug device.

Galvanneal steel cabinet passes through Bard's 10 stage paint process. The result is a handsomely finished air conditioner with baked-on polyester enamel to withstand the most difficult weather conditions.

Electrical components are easily accessible for routine inspection and maintenance through service panel opening on right side of unit.

Air filters are standard equipment. Filters are easy to replace.

Circuit breakers — Non-circuit breaker and circuit breaker models available. See specification sheet for electrical ratings.

Fresh air damper assembly — Available as field installed optional equipment.

Both models 30 & 36 are available in 0 - 5 - 10 - 15 KW single phase sizes.

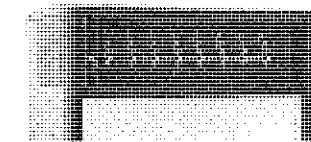


LISTED

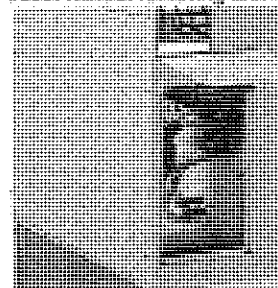


CERTIFIED

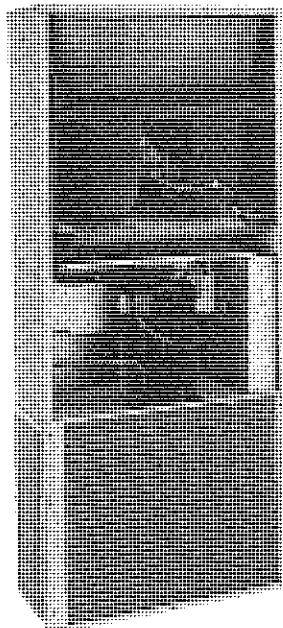
Model MAC 36



Electric Heat Strips with automatic limit and thermo cut-off are available as a built-in option. Accessible from side panel without removing unit from wall.



Electrical Components Accessible From Side



Capacity And Efficiency Ratings

Model	Phase	Cooling Capacity BTUH	SEER
MAC30	1	28,600	9.00
MAC36	1	35,000	8.50

All capacity, efficiency and cost of operation information is with fresh air cover plate, Model BOP20, installed. Cover plate is standard equipment and is recommended for use to obtain maximum energy efficiency where fresh air opening is not required.

The Modular Master's access doors can be easily removed to facilitate quick service and parts maintenance.
(As shown at left.)

Specifications

Model	MAC30A-A00	MAC30A-A05	MAC30A-A10	MAC30A-A15	MAC36A-A00	MAC36A-A05	MAC36A-A10	MAC36A-A15
Heater Kw @ 240/208V	None	5/3.75	10/7.5	15 /11.25	None	5/3.75	10/7.5	15 /11.25
Cooling Capacity BTUH	28,600	28,600	28,600	28,600	35,000	35,000	35,000	35,000
Heating Capacity BTUH**	None	19,000/ 15,000	36,000/ 27,000	53,000/ 40,000	None	19,000/ 15,000	36,000/ 27,000	53,000/ 40,000
Electrical Rating — 60 Hz	230/208-1	230/208-1	230/208-1	230/208-1	230/208-1	230/208-1	230/208-1	230/208-1
Operating Voltage Range	197-253	197-253	197-253	197-253	197-253	197-253	197-253	197-253
Minimum Circuit Ampacity	25	31	57	83	31	31	57	83
No. Field Power Ckts.	1	1	1	1	1	1	1	1
**Field Wire Size	#10	#8	#4	#2	#8	#8	#4	#2
Ground Wire Size	#10	#10	#10	#8	#10	#10	#10	#8
***Req'd Max. External Fuses	40	40	60	90+	50	50	60	90+
Total Unit Amps 240/208	18.3/19.8	24.7/22.0	45.5/40.1	66.4/58.0	22.3/23.8	24.7/23.8	45.5/40.1	66.4/58.0
Internal Fuses (Standard)	None	None	None	60/30	None	None	None	60/30
Internal Circuit Breakers (Option C)	40	40	60	60, 30	50	50	60	60, 30
Compressor — Circuit A								
Volts	230/208				230/208			
Rated Load Amps 230/208	13/14.5				17/18.5			
Branch Circuit Selection Current	15.5				20.2			
Lock Rotor Amps	76/76				93/93			
Fan Motor & Condenser								
Fan Motor — HP/RPM	1/5/1050				1/5/1050			
Fan Motor — AMPS	1.4				1.4			
Fan Motor — DIA/CFM	20"/1800				20"/1800			
Face Area Sq. Ft./Row/Fins per in.	4.7/2/12				4.7/2/12			
Motor and Evaporator								
Blower Motor — HP/RPM	1/2/1600				1/2/1600			
Blower Motor — AMPS	3.9				3.9			
CFM Cooling & E.S.P. w/Filter (Rated) (Hi)	1000/30				1060/15			
Face Area Sq. Ft./Row/Fins per in.	2.7/2/13				2.7/2/13			
Filter Sizes (Inches)	14x25x1				14x25x1			
Refrigerant 22 — oz.	61				58			
Shipping Weight — lbs.	310				315			

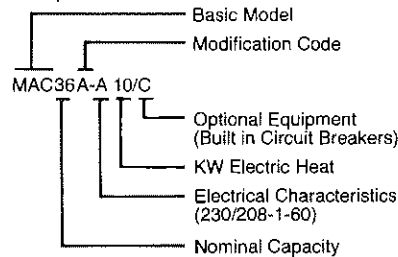
**60°C copper wire size.
 ***Maximum time delay fuse or HACR type circuit breaker.
 + Sizes 70A or greater are not HACR type.
 + + Includes blower motor.

Indoor Blower Performance CFM — Dry Coil

E.S.P. in H ₂ O	MAC30A MAC36A
	High
.0	1200
.10	1160
.20	1120
.30	1075
.40	1035
.50	970

Nomenclature Explanation

Example:



Important

While this electrical data is presented as a guide, it is important to electrically connect, properly sized fuses and conductor wires in accordance with the National Electrical Code and all existing local codes.



CERTIFIED



LISTED

Underwriters Listed for outdoor installation

Cooling Application Data

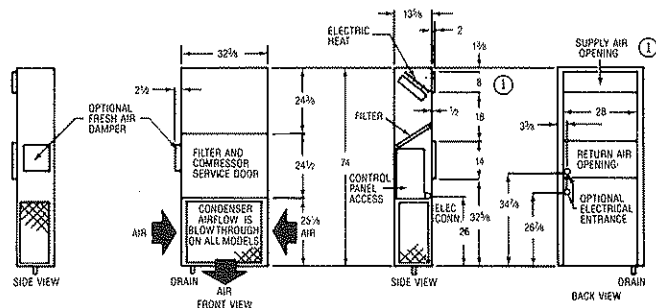
Below 65°F, unit requires Low Ambient Control, Part No. LAC-1.

Outdoor Model		70°	75°	80°	85°	90°	95°	100°	105°	110°	115°
MAC30A	Total BTUH	32,200	31,500	30,700	30,000	29,300	28,600	27,900	27,200	26,400	25,700
	Sensible BTUH	22,600	22,400	22,300	22,100	22,000	21,800	21,600	21,500	21,300	21,200
	Latent BTUH	9,600	9,100	8,400	7,900	7,300	6,800	6,300	5,700	5,100	4,500
MAC36A	Total BTUH	39,400	38,500	37,600	36,750	35,850	35,000	34,100	33,200	32,350	31,400
	Sensible BTUH	27,300	26,950	26,600	26,200	25,800	25,450	25,100	24,700	24,400	24,000
	Latent BTUH	12,100	11,550	11,000	10,550	10,050	9,550	9,000	8,500	7,950	7,400

All specifications subject to change without notice.

If fresh air is required, an optional fresh air assembly (FAD 20) must be ordered separately.

- ① The supply duct requires a one inch clearance on all four sides from combustible materials. This is required for first three feet of supply duct. Refer to installation instructions for more detailed information.



BARD MANUFACTURING CO.
 BRYAN, OHIO 43506
*Since 1914... Moving ahead,
 just as planned.*

Specifications subject to change without notice.

Before purchasing this appliance, read important energy cost and efficiency information available from your retailer.

**Form No. S3113
 December, 1990**

Supersedes S3113
 June, 1990