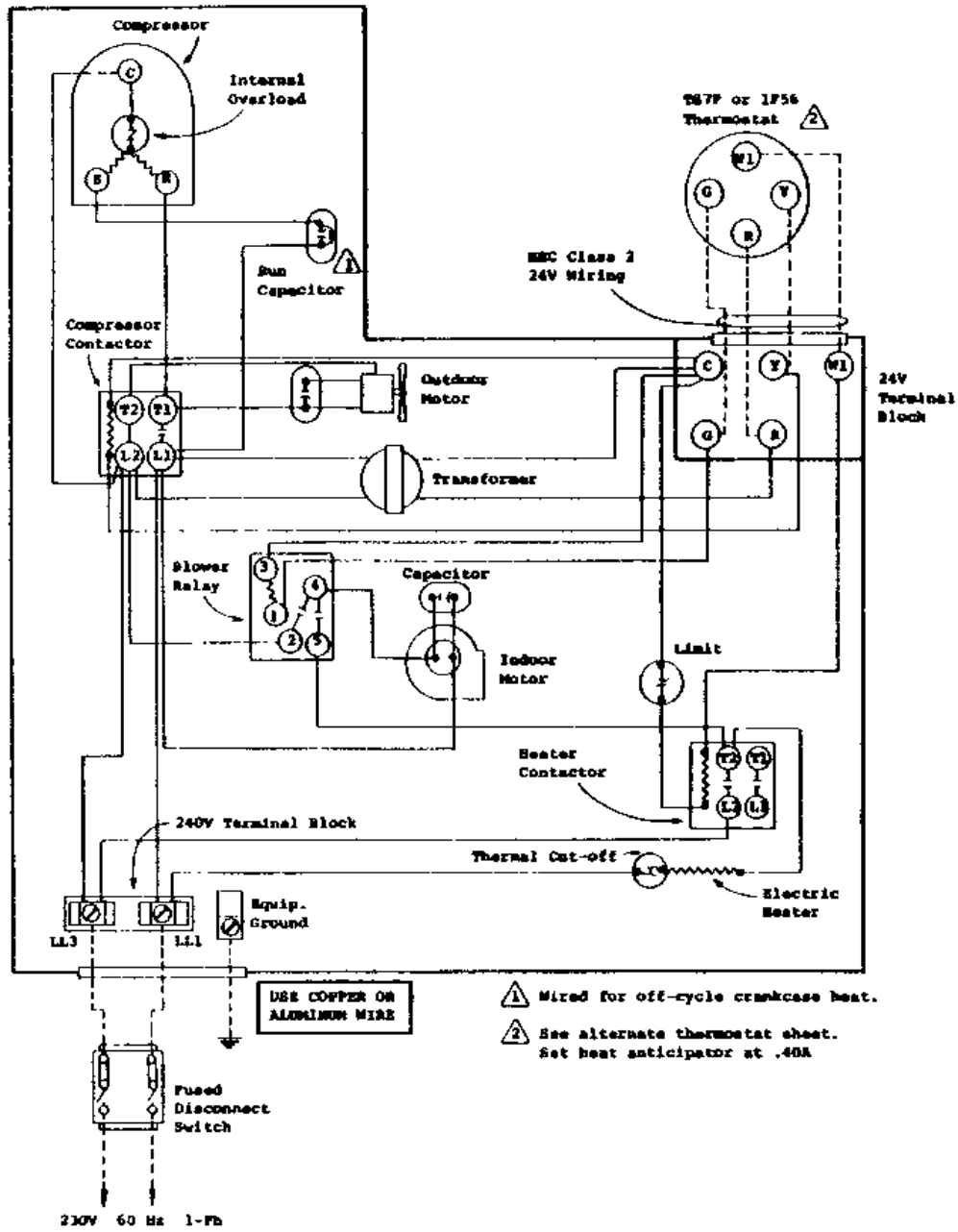


Model
36WA2

Factory Wiring ———
Field Wiring - - - - -

4009-110

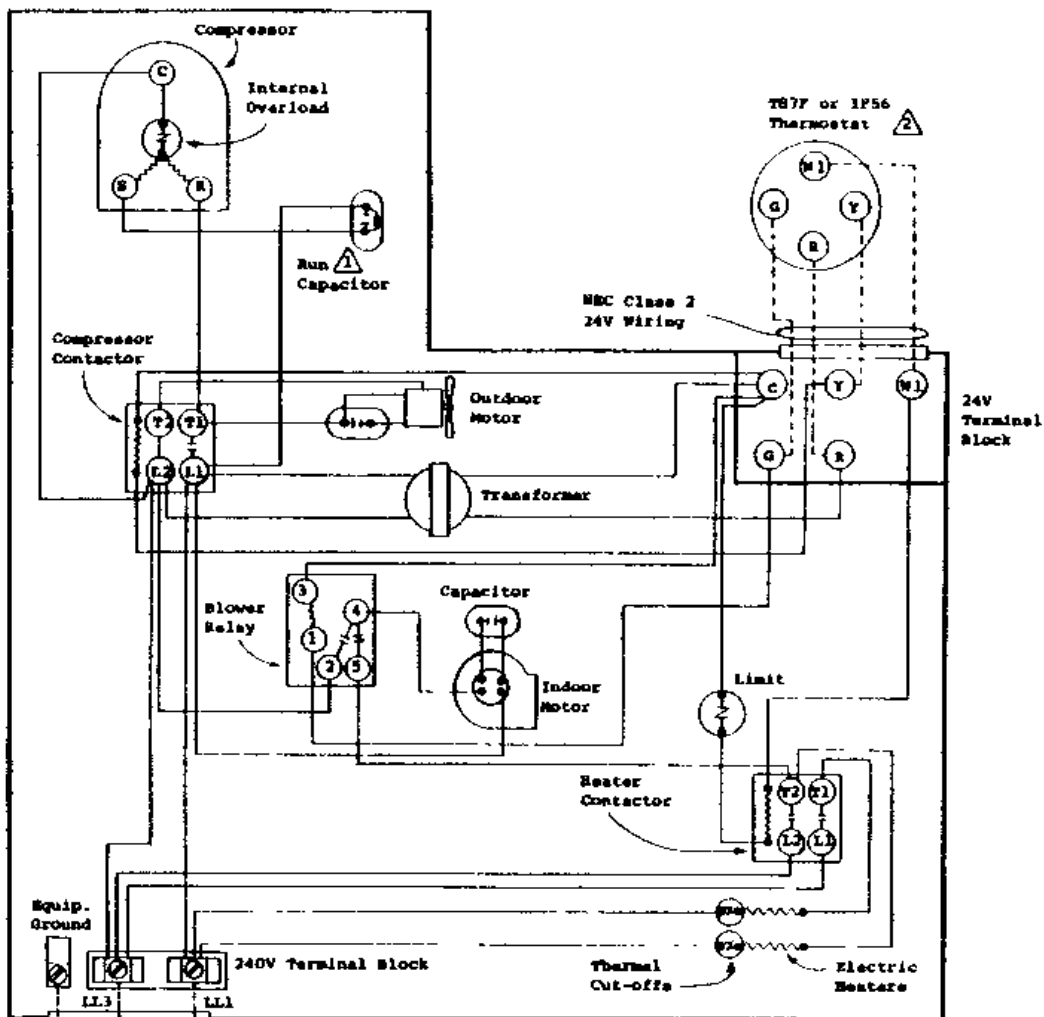


- ⚠ Wired for off-cycle crankcase heat.
- ⚠ See alternate thermostat sheet. Set heat anticipator at .40A

Model
16WK2
w/4 or 5Ph

Factory Wiring ———
Field Wiring - - - - -

4009-120



USE COPPER OR ALUMINUM WIRE

- ⚠ Wired for off-cycle crankcase heat.
- ⚠ See alternate thermostat sheet. Set heat anticipator at .60A

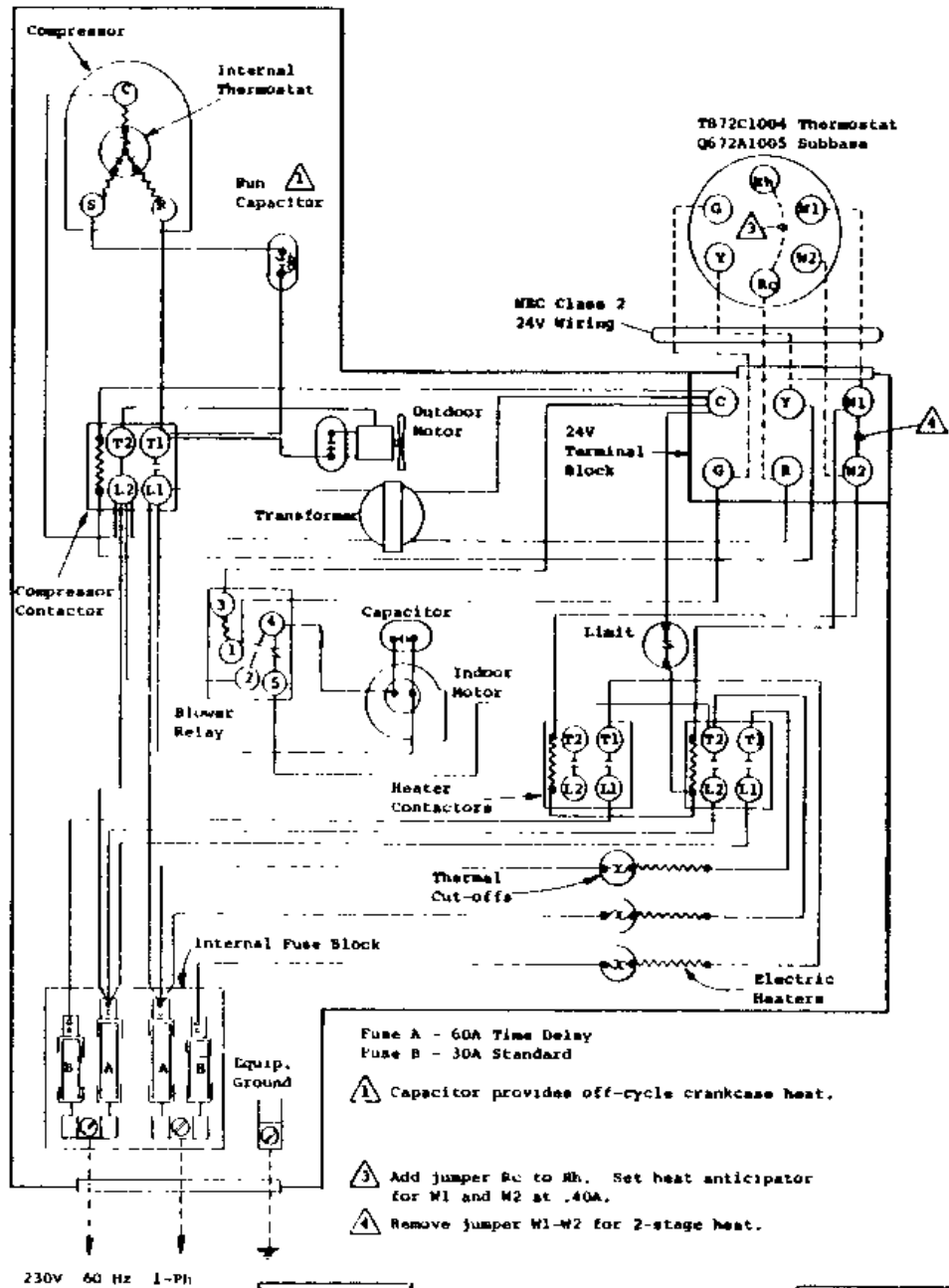
Fused Disconnect Switch

230V 60 Hz 1-Ph

Model
36WA2
w/8 or 10Rw

Factory Wiring ———
Field Wiring - - - - -

4009-130



Factory Wiring ———
Field Wiring - - - - -