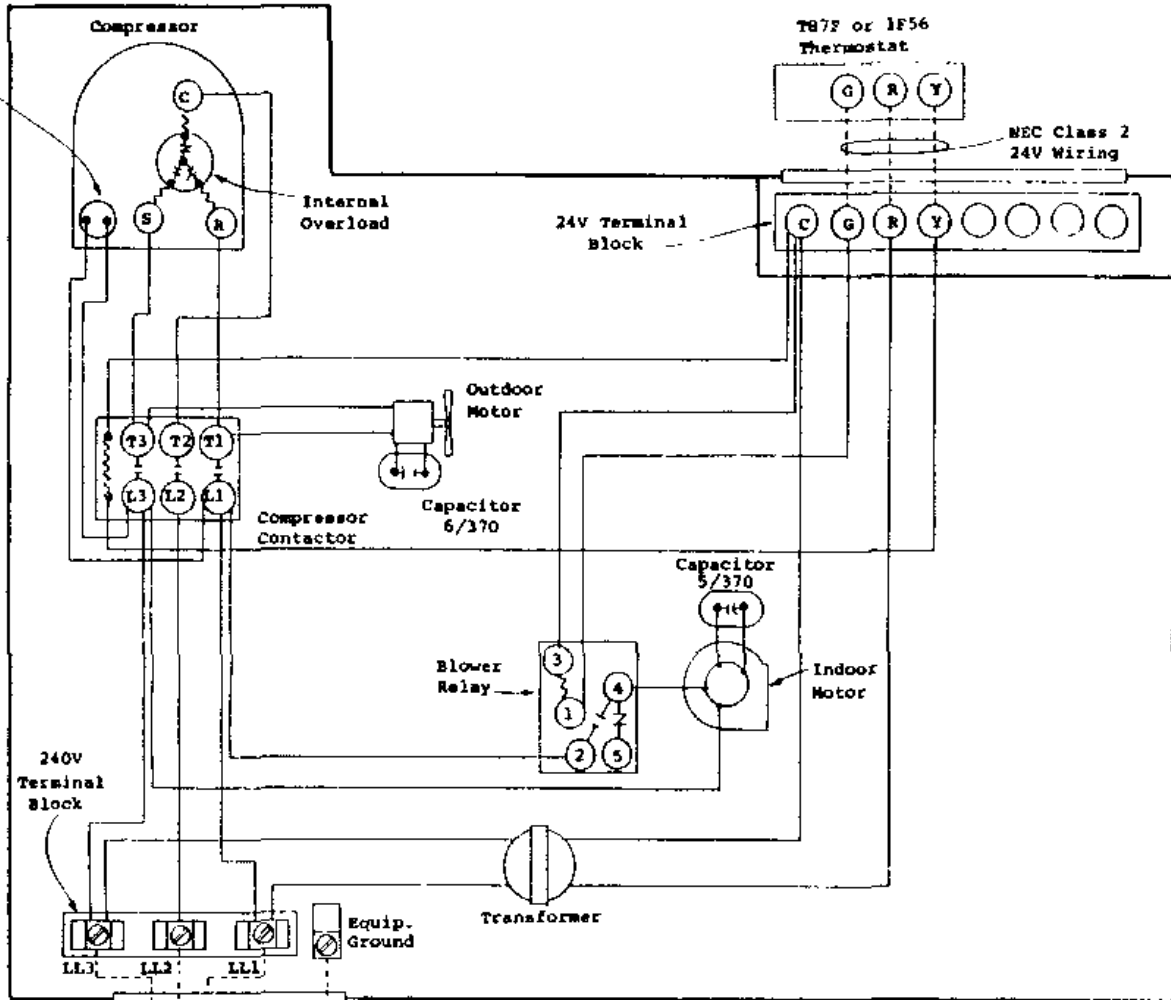


Immersion
Crankcase
Heater



Fused
Disconnect
Switch

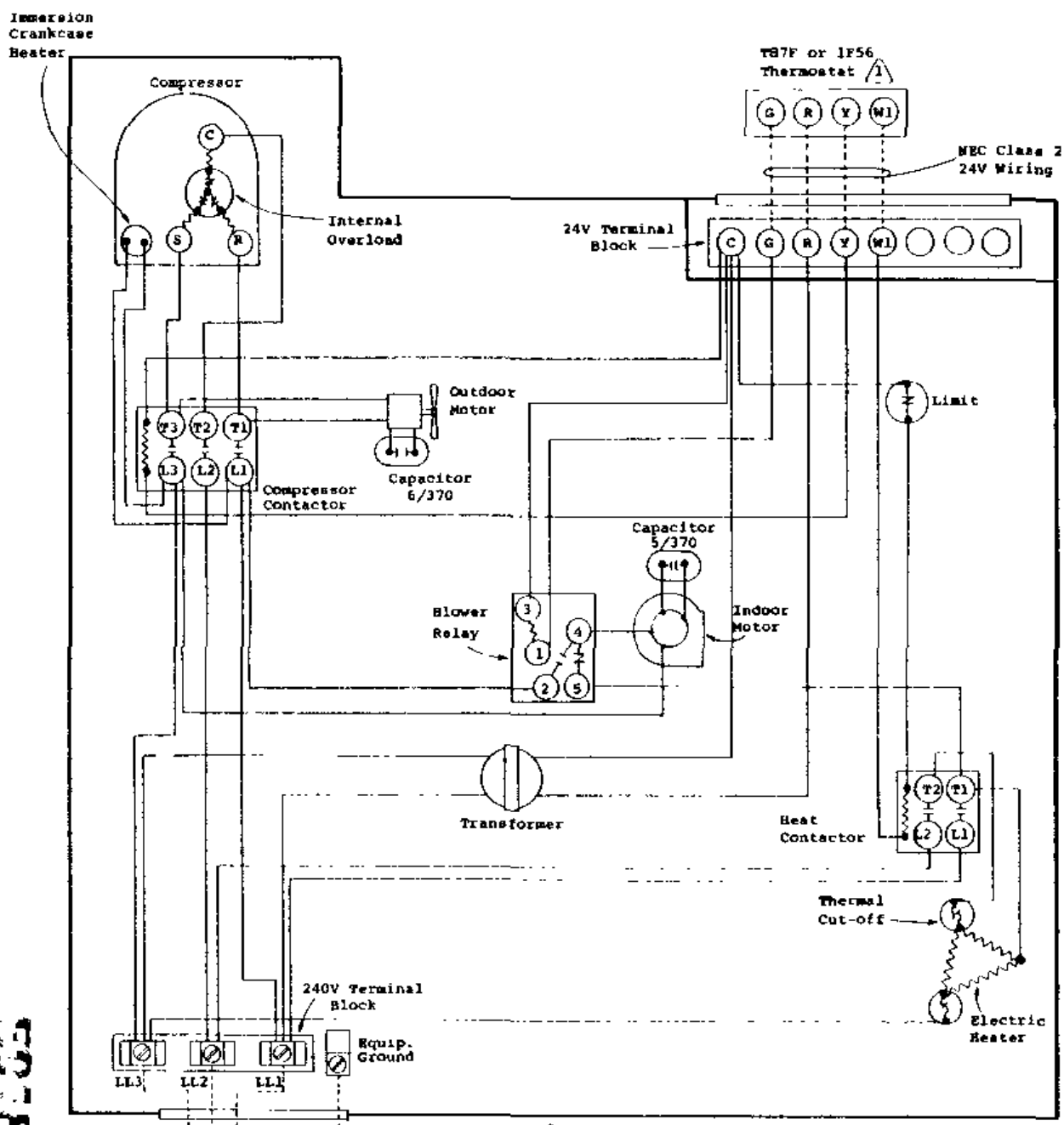
230V 60 Hz 3-Ph

USE COPPER OR
ALUMINUM WIRE

Factory Wiring ———
Field Wiring - - - - -

MODEL
48WA3

400B4



Fused Disconnect Switch

230V 60 Hz 3-Ph

USE COPPER OR ALUMINUM WIRE

1 See alternate thermostat sheet. Set anticipator at .40A.

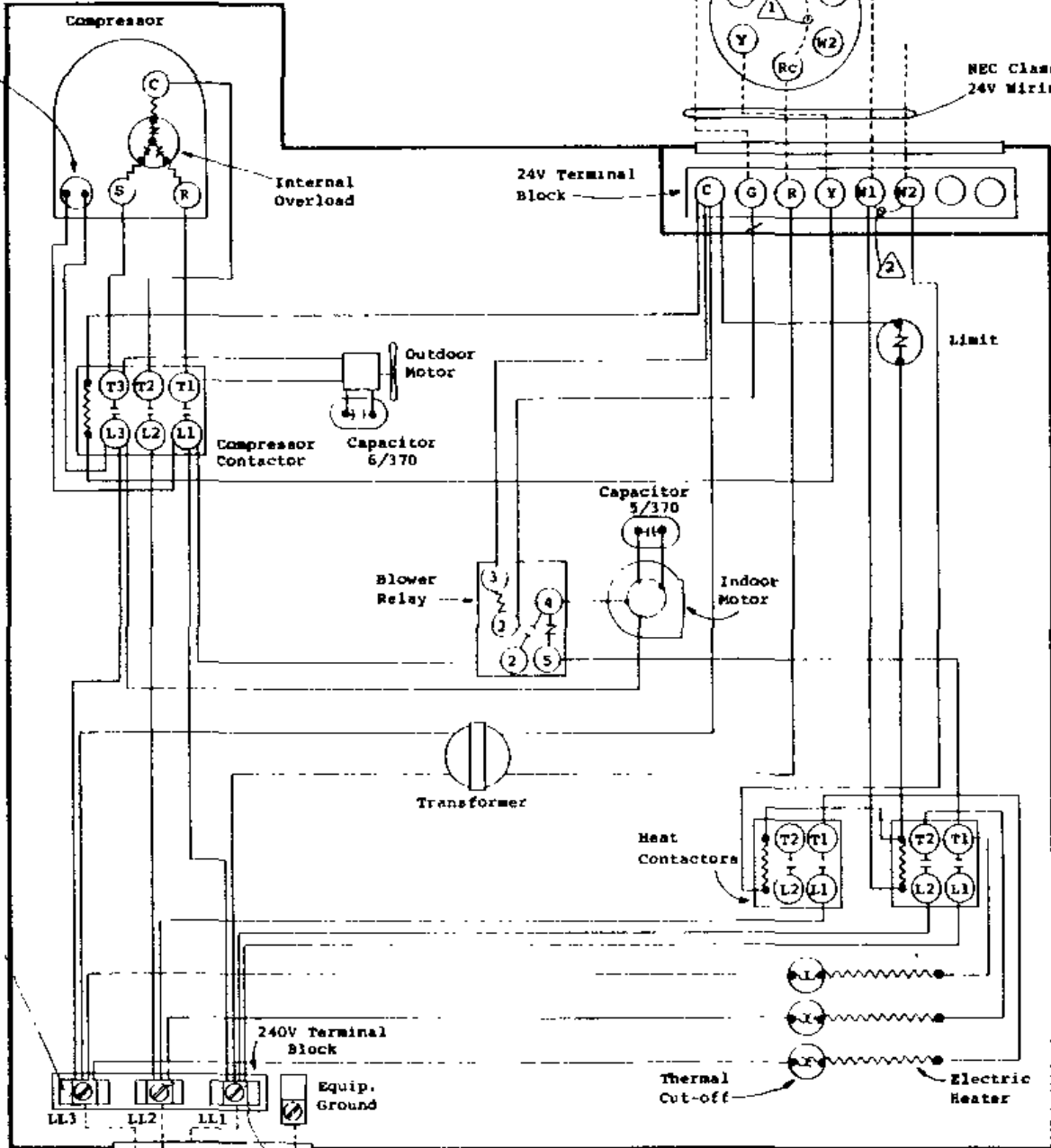
MODEL 40WA3 w/9kw

Lozy Wiring _____
Field Wiring - - - - -

Immersion
Crankcase
Heater

T872C1004 Thermostat
Q672A1005 Subbase

NEC Class 2
24V Wiring



Fused
Disconnect
Switch

230V 60 Hz 3-Ph

USE COPPER OR
ALUMINUM WIRE

Factory Wiring _____
Field Wiring - - - - -

- ① Add jumper Rc to Rh. Set heat anticipators at .40A.
- ② Remove jumper for 2-stage heat.
- ③ Set heat anticipator for W1 and W2 at .40A.

MODEL
48NA3
w/12 or 15Kw

500845

