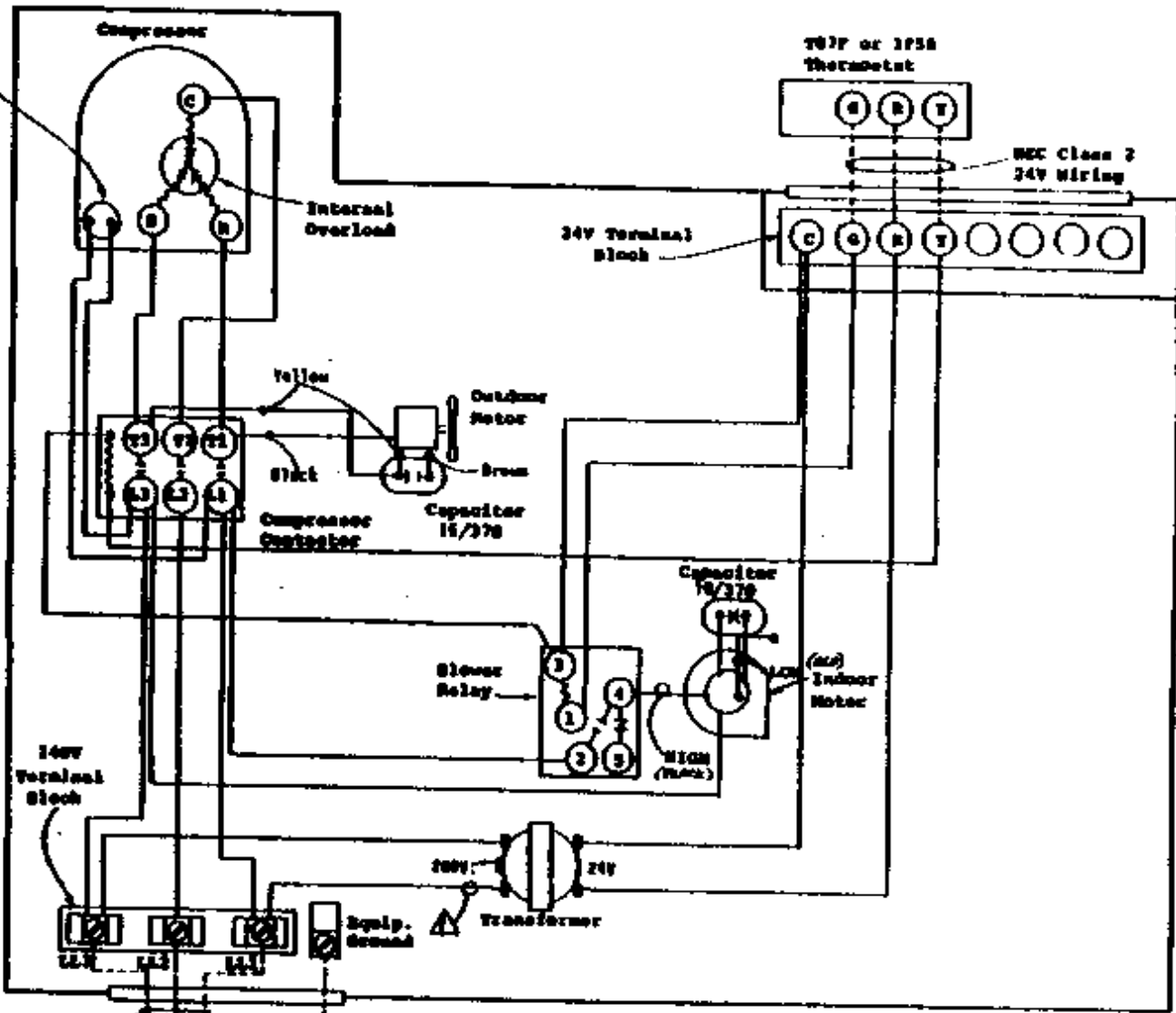


Imperial  
Crankcase  
Motor



Fused  
Disconnect  
Switch

330/200-60-3

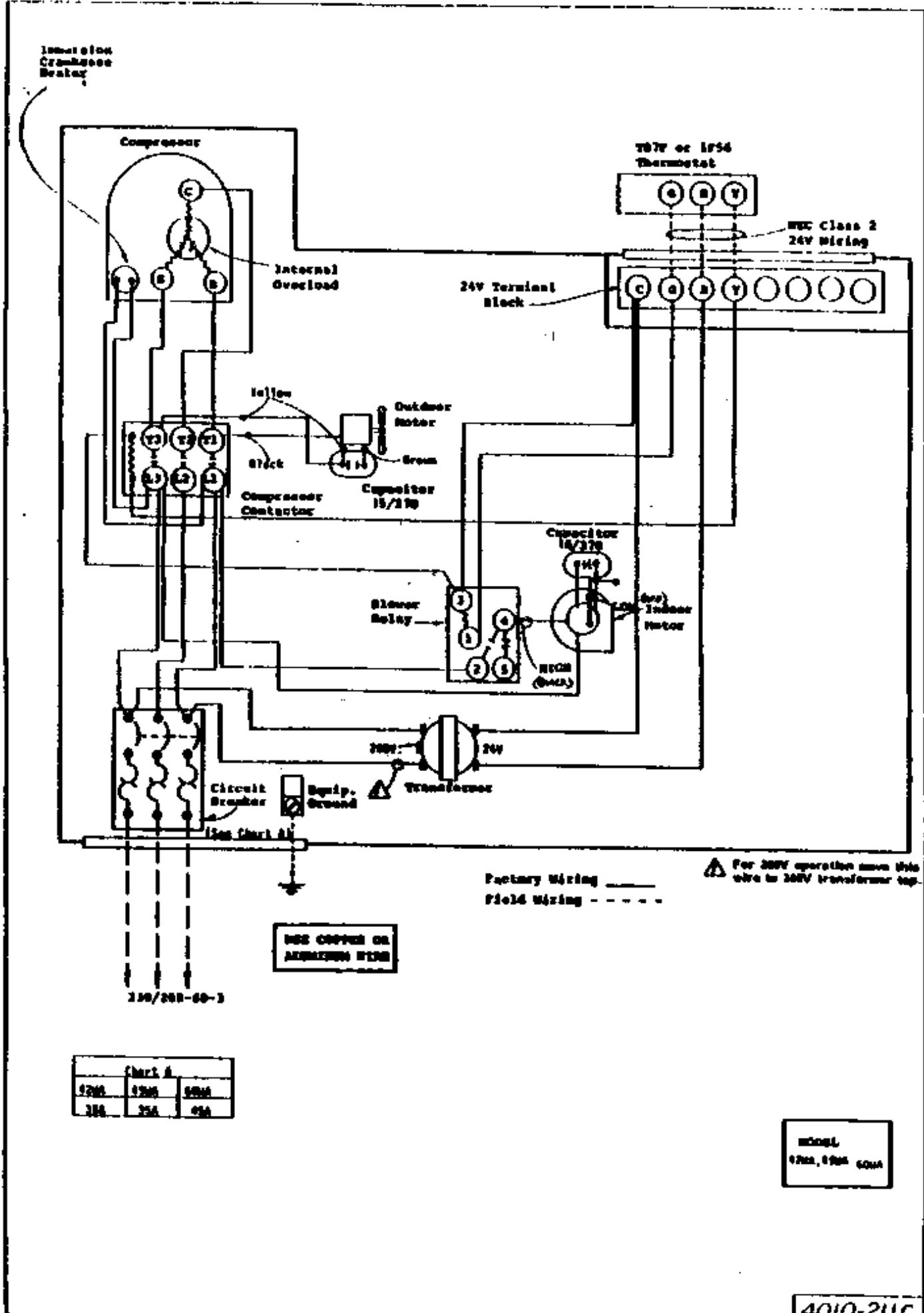
USE COPPER OR  
ALUMINUM WIRE

Factory Wiring ———  
Field Wiring - - - -

⚠ For 200V operation move this  
wire to 200V transformer tap.

MODEL  
12NR, 6WR  
60AA

100210 H



⚠ For 200V operation move this wire to 200V transformer tap.

Factory Wiring ———  
Field Wiring - - - - -

USE COPPER OR ALUMINUM WIRE

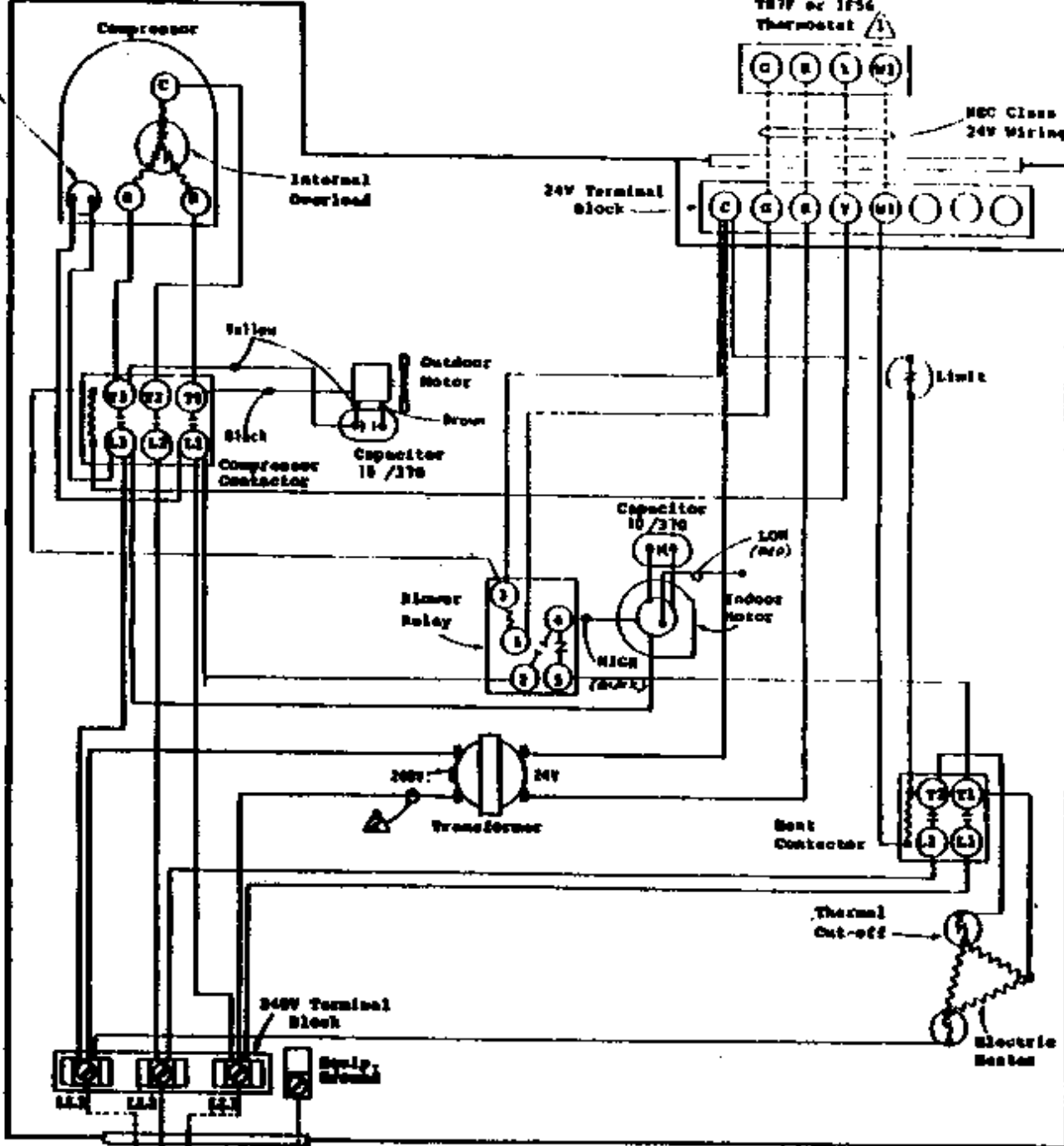
230/200-60-3

Chart A		
4200	4200	5000
300	350	450

MOORE  
1700, 1700 6000

4010-211C

Immersion  
Cooling  
Master



Field  
Disconnect  
Switch

230/200-60-3

USE COPPER OR  
ALUMINUM WIRE

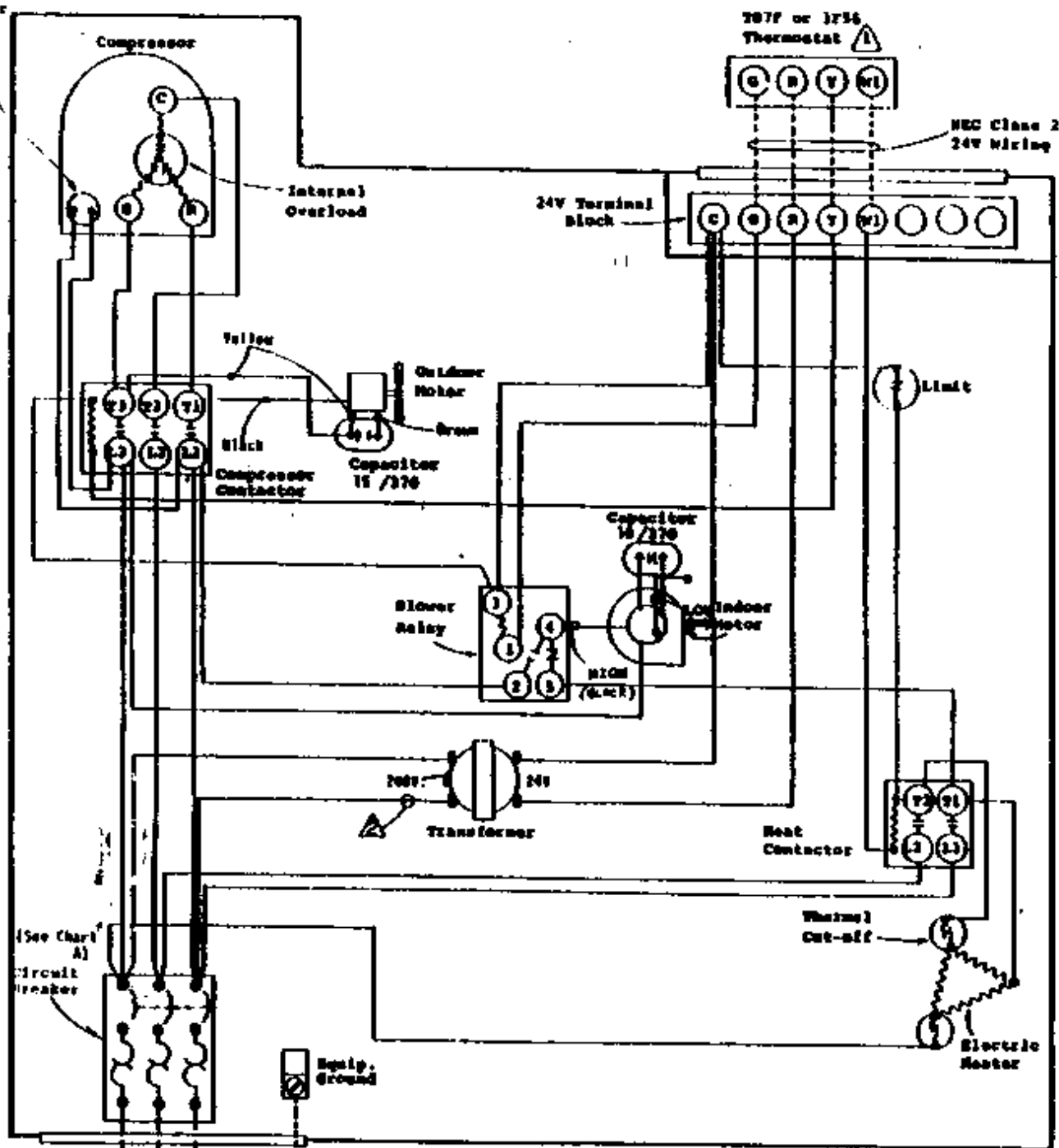
- ⚠ Set heat anticipator at .4M.
- ⚠ For 200V operation move this wire to 200V transformer tap.

MODEL  
420A, 420B, 600A  
1/4 or 3/8"

Factory Wiring ———  
Field Wiring - - - - -

4010-220 K

Immersion  
Crankcase  
Heater



- ⚠ Set limit anticipator at .40A.
- ⚠ For 200V operation move this wire to 200V transformer tap.

SEE COPPER OR ALUMINUM WIRE

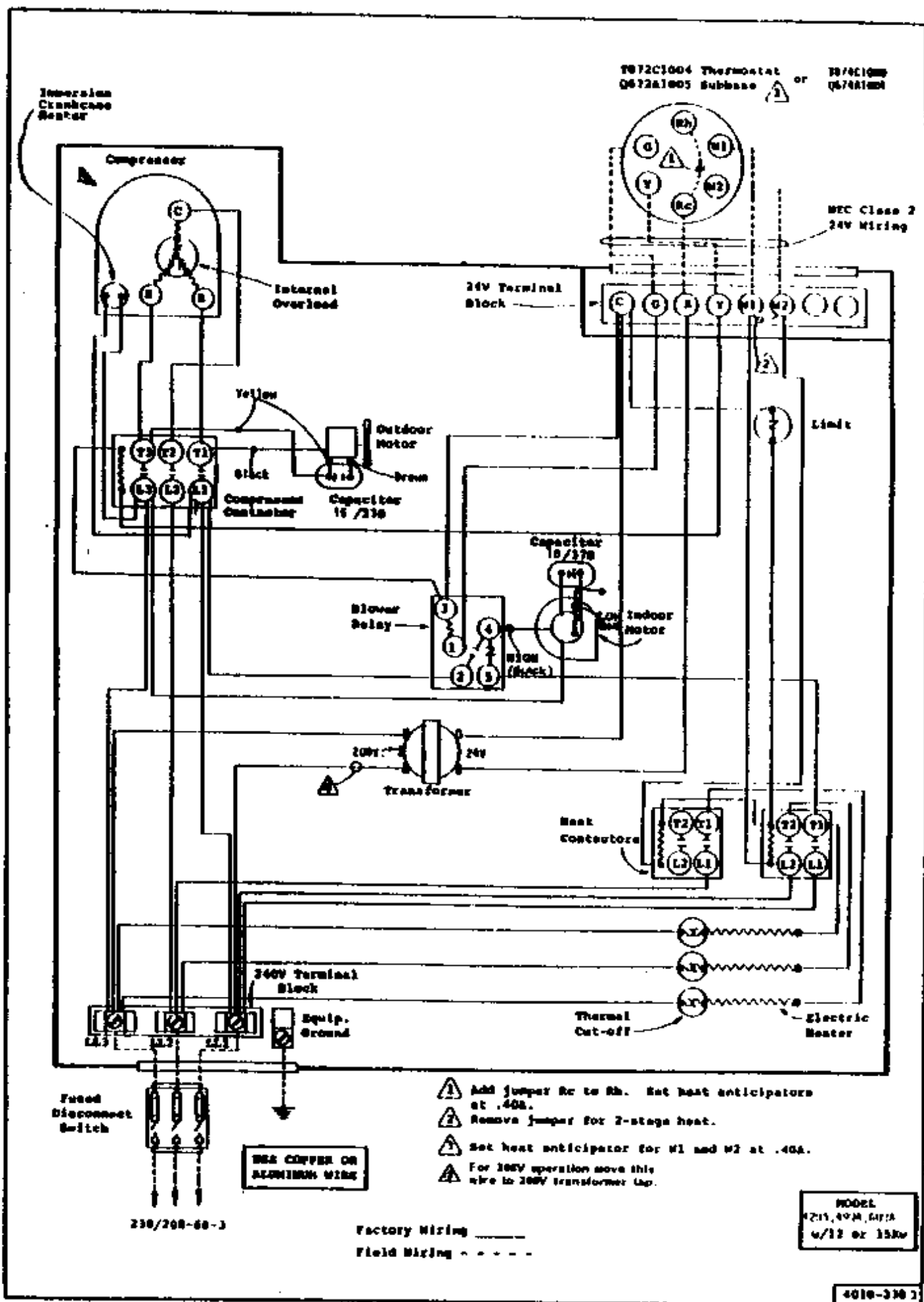
210/20h-60-3

Chart A		
42VA	48VA	60VA
75A	95A	115A

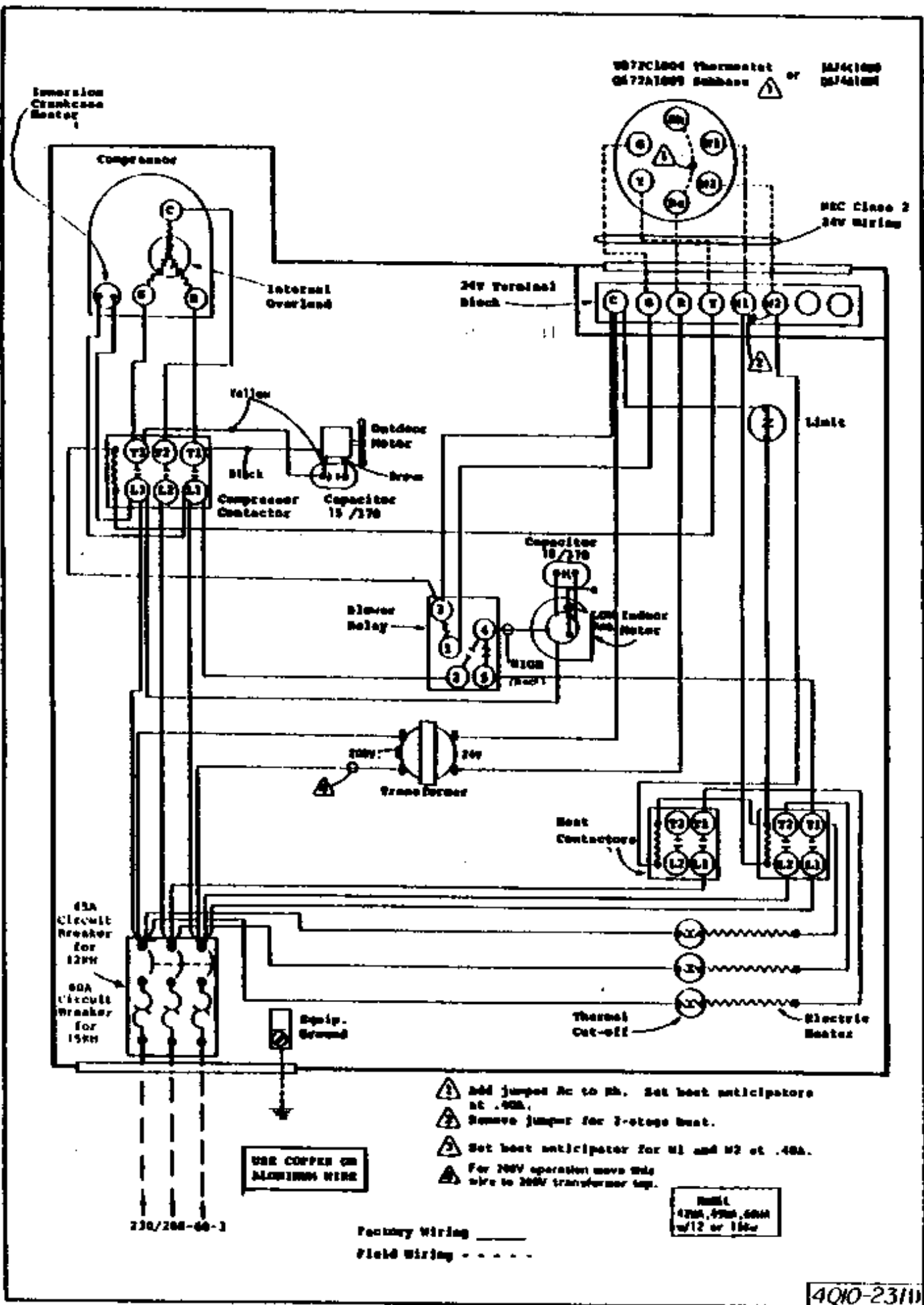
MODEL  
62VA, 48VA, 60VA  
w/6 or 9A

Factory Wiring ———  
Field Wiring - - - - -

4010-221G



- Add jumper Rc to Rh. Set heat anticipators at .40A.
- Remove jumper for 2-stage heat.
- Set heat anticipator for W1 and W2 at .40A.
- For 200V operation move this wire to 200V transformer tap.



W872C1004 Thermostat or M42C1000  
 Q872A1009 Subbase or M42A1001

NEC Class 2  
 24V wiring

Immersion  
 Condenser  
 Motor

Compressor

Internal  
 Overload

24V Terminal Block

Yellow

Outdoor Motor

Black  
 Compressor  
 Contactor

Brown  
 Capacitor  
 15 / 170

Blower Relay

Capacitor  
 15 / 170

Indoor  
 Motor

Transformer

Heat  
 Anticipator

45A  
 Circuit  
 Breaker  
 for  
 120V

60A  
 Circuit  
 Breaker  
 for  
 150V

Equip. Ground

Thermal Cut-off

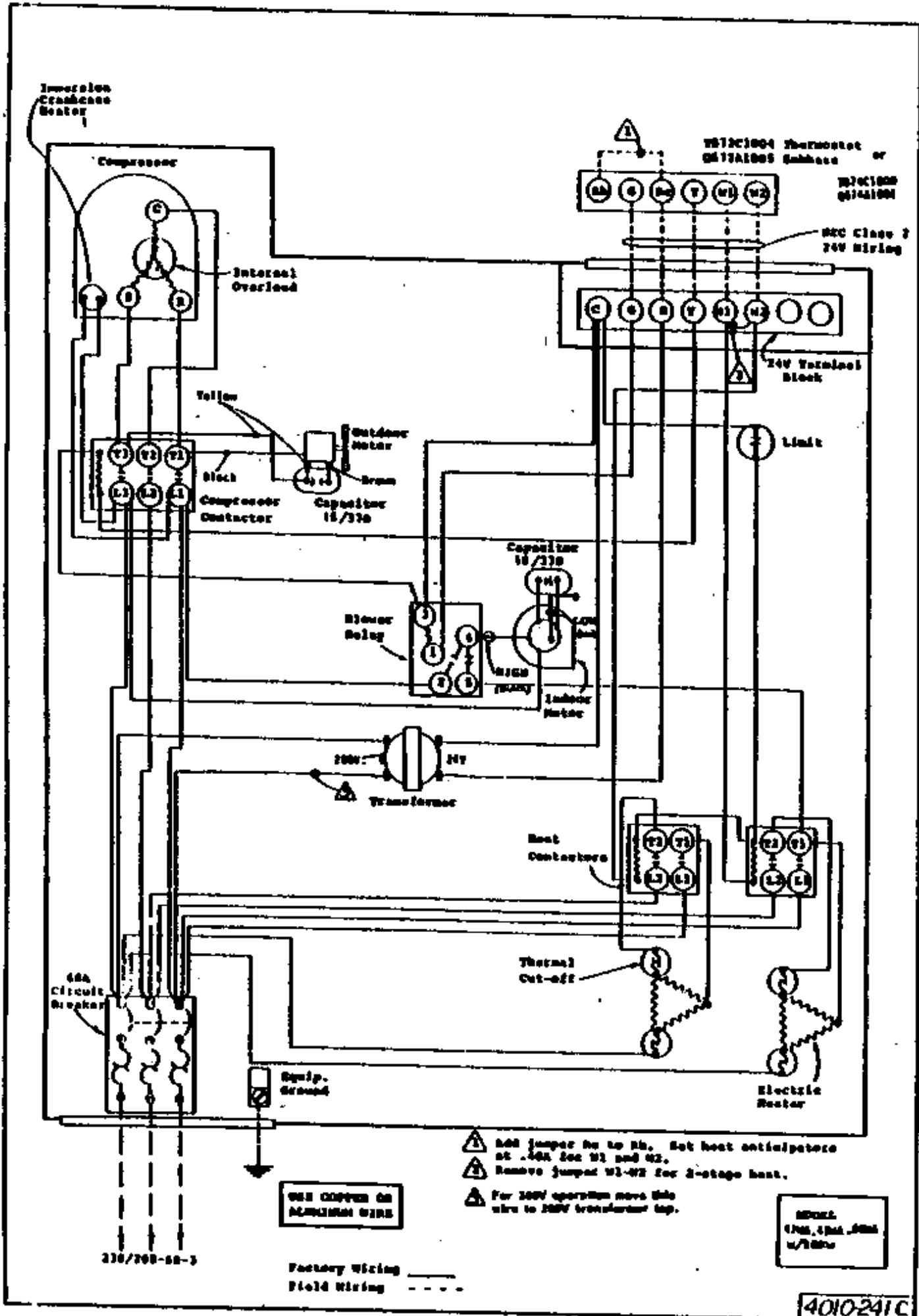
Electric Heater

- ⚠ Add jumper Ac to Ph. Set heat anticipator at .40A.
- ⚠ Remove jumper for 3-stage heat.
- ⚠ Set heat anticipator for M1 and M2 at .40A.
- ⚠ For 200V operation move W4 wire to 200V transformer tap.

USE COPPER OR  
 ALUMINUM WIRE

Model  
 4200, 4200, 6000  
 w/12 or 15W





- ⚠ Add jumper for to R2. Set heat anticipators at .40A for W1 and W2.
- ⚠ Remove jumper W1-W2 for 2-stage heat.
- ⚠ For 200V operation move this wire to 200V transformer tap.

W572C1004  
1700, 1701, 1702  
u/1000